

EMWD STANDARD NOTE

CONSTRUCTION NOTE
EASTERN MUNICIPAL WATER DISTRICT REQUIRES THAT A PRE-CONSTRUCTION CONFERENCE BE SCHEDULED PRIOR TO ANY CONSTRUCTION BY CALLING EASTERN MUNICIPAL WATER DISTRICT RECYCLED WATER PROGRAM COORDINATOR AT (951) 928-3777, EXTENSION 4412.

INSTALLATION NOTES

1. THE RECYCLED WATER IRRIGATION SYSTEM SHOWN ON THESE PLANS SHALL BE CONSTRUCTED IN ACCORDANCE WITH THE MOST RECENT EDITION OF THE EASTERN MUNICIPAL WATER DISTRICT STANDARDS AND SPECIFICATIONS FOR DEVELOPER'S PROJECTS.
2. HOSE BIBS ARE STRICTLY PROHIBITED ON RECYCLED WATER IRRIGATION SYSTEMS. POTABLE QUICK COUPLERS ARE NOT ALLOWED WITHIN THE RECYCLED WATER IRRIGATION AREA.

COLOR CODING NOTES

3. ALL IRRIGATION EMISSION DEVICES, SUCH AS SPRAY HEADS, ROTORS, BUBBLERS, DRIP EMITTERS, OR DRIP ASSEMBLIES SHALL BE IDENTIFIED WITH PURPLE IDENTIFICATION BODIES, COLLARS, CAPS, CONNECTORS, ADAPTERS, ETC. TO PERMANENTLY LABEL THE COMPONENTS AS EMITTING RECYCLED IRRIGATION WATER. THE PURPLE IDENTIFICATION SHALL BE EXPOSED TO THE SURFACE.
4. ALL IRRIGATION RISERS, DRIP LINE, AND COMPONENTS THAT ARE NOT AVAILABLE FROM THE MANUFACTURE WITH PURPLE RECYCLED WATER IDENTIFICATION SHALL BE LABELED WITH RECYCLED WATER DECALS OR STICKERS.
5. ALL IRRIGATION COMPONENTS AND VALVES MUST HAVE A RECYCLED WATER ID TAG AND A VALVE ID TAG IN A PURPLE VALVE BOX WITH A PURPLE LID. THE PURPLE LID SHALL BE HEAT BRANDED WITH THE VALVE LABEL.

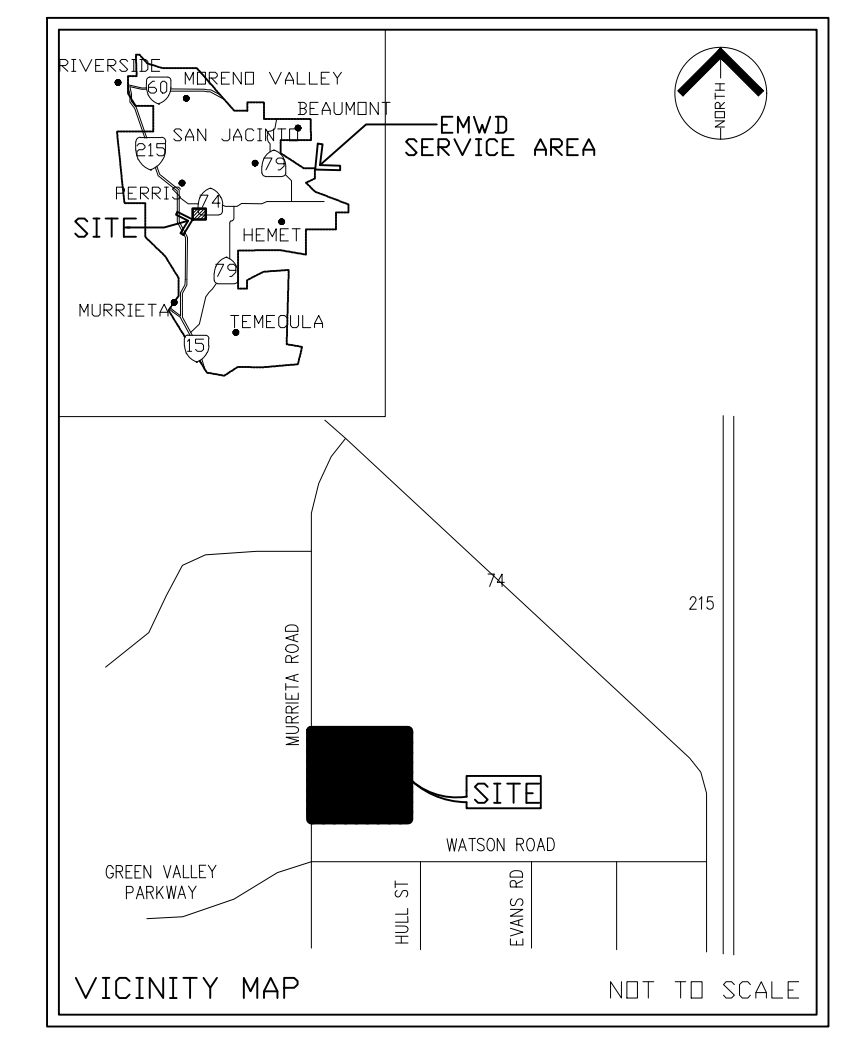
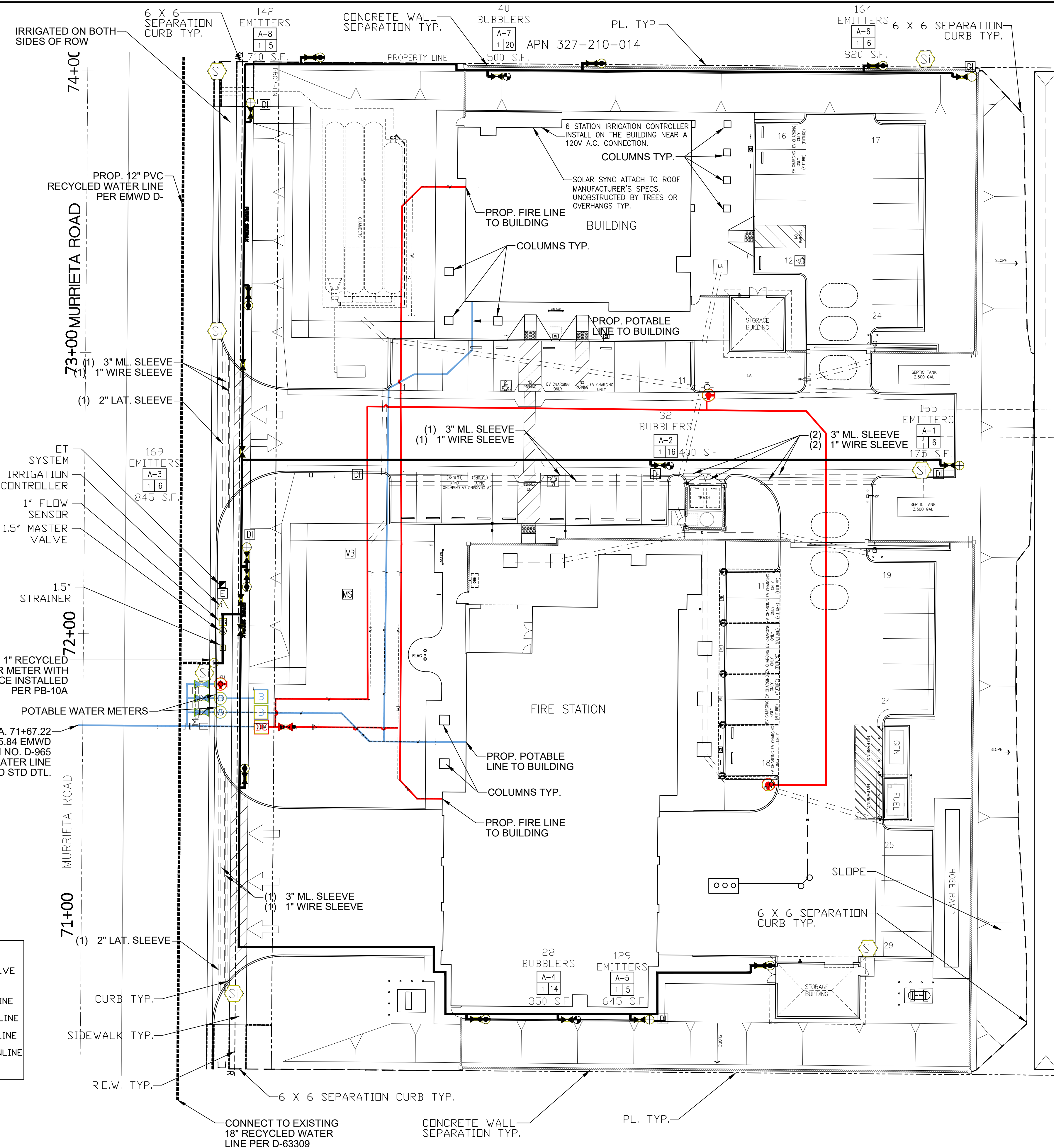
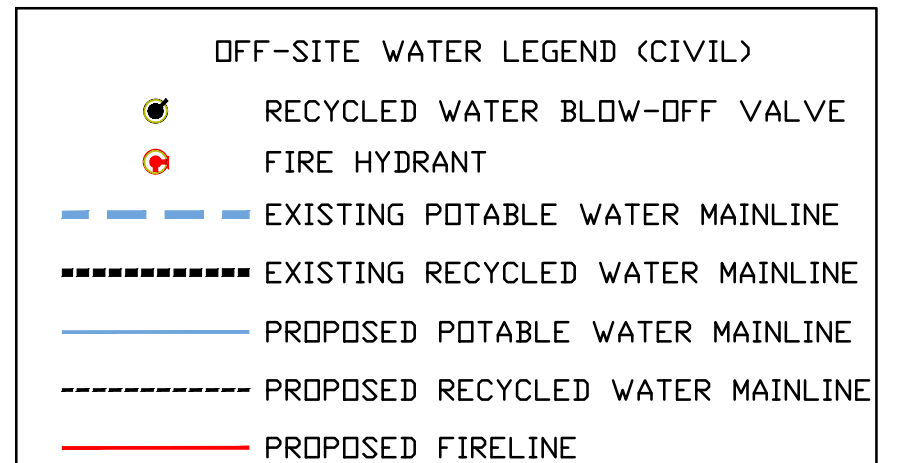
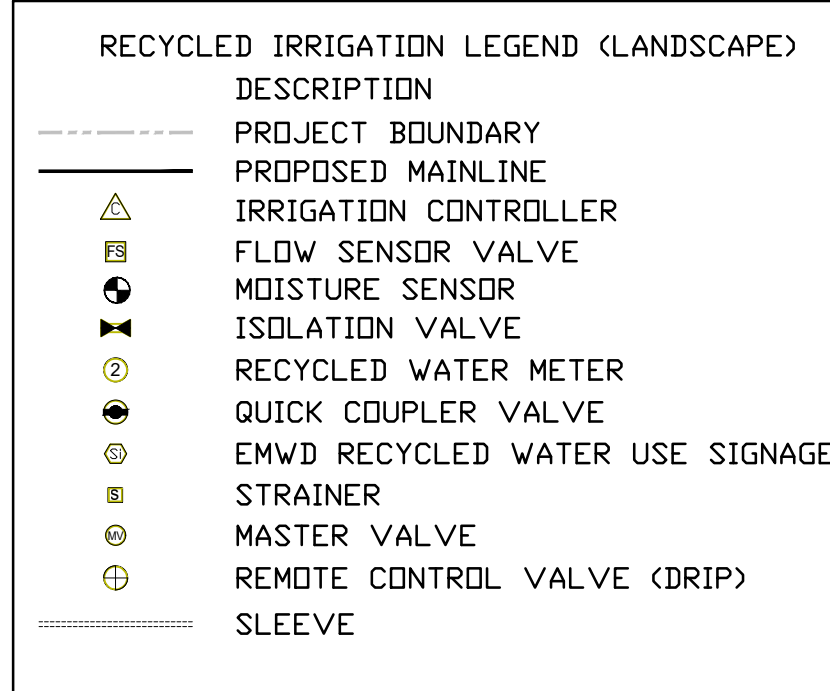
RECYCLED WATER AND POTABLE WATER SEPARATION CLEARANCE NOTE

THE RECYCLED WATER IRRIGATION MAINLINE IS SHOWN DIAGRAMMATICALLY FOR CLARITY PURPOSES ONLY. THE RECYCLED WATER IRRIGATION MAINLINE MUST:

6. BE INSTALLED WITH A 4' (FOOT) MINIMUM HORIZONTAL CLEARANCE FROM ALL POTABLE WATERLINES AND FIRE LINES.
7. BE INSTALLED WITH A 1' (FOOT) OF VERTICAL CLEARANCE AND BE LOCATED UNDER ALL POTABLE WATERLINES AND FIRE LINES.
8. WHERE THE RECYCLED WATER IRRIGATION MAINLINES MUST BE INSTALLED ABOVE THE POTABLE WATERLINE, A 4" (INCH) MINIMUM VERTICAL CLEARANCE MUST BE MAINTAINED AND THE RECYCLED WATER IRRIGATION MAINLINE MUST BE INSTALLED IN A CONTINUOUS SLEEVE (PVC CLASS 200 PIPE MINIMUM) WHICH EXTENDS A MINIMUM OF 10' (FEET) EACH SIDE OF THE POTABLE WATERLINE OR FIRE LINE.

POC METER DATA TABLE

WATER METER #1	
P.O.C. DESIGNATION	METER 1
STREET STATION	71+90.15
SERVICE LATERAL LINE SIZE (IN)	2"
RECYCLED WATER METER SIZE (IN)	1"
EMWD METER DETAIL REFERENCE NUMBER	PB-10A
DESIGN MAX FLOW (GPM)	6
CHEMICAL INJECTION SYSTEM (Y/N)	NO
BOOSTER PUMP (PSI BOOST)	NO
METER ELEVATION (FT)	1405.84
PRESSURE RANGE (PSI)	75 psi
DESIGN PRESSURE (PSI)	60 PSI
TOTAL AREA SERVED (SF)	39,204
ANNUAL WATER USAGE (ACRE/FT)	2.16
EMWD REFERENCE DRAWING NUMBER	D-XXXX
INITIAL SOURCE OF WATER SUPPLY	RECYCLED
IRRIGATION TYPE (DRIP, SPRAY, ROTOR, ETC)	DRIP
WATER WINDOW RESTRICTED	UNRESTRICTED



I AGREE TO COMPLY WITH THE CRITERIA OF ORDINANCE (MMC 15.04) AND TO APPLY THEM FOR THE EFFICIENT USE OF WATER IN THE IRRIGATION DESIGN PLAN.

Vincent DiDante 4-13-26
APPLICANT/ LANDSCAPE ARCHITECT DATE

PRIOR TO BACKFILLING THE PARTY RESPONSIBLE FOR IRRIGATION INSTALLATION SHALL CONDUCT A PRELIMINARY FIELD INSPECTION OF THE IRRIGATION SYSTEM.

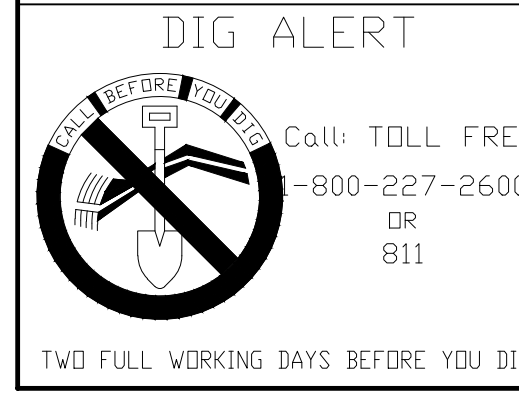
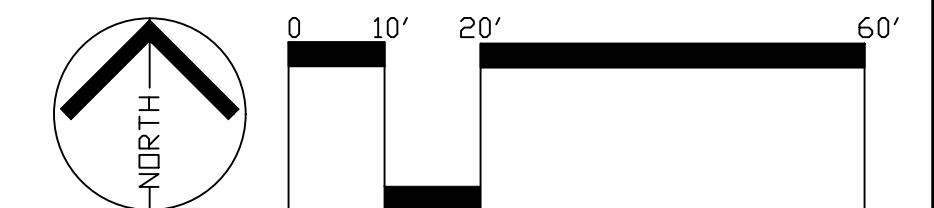
AFTER PROJECT INSTALLATION AN AUDIT SHALL BE CONDUCTED BY A CERTIFIED IRRIGATION AUDITOR AND FINDINGS STATED IN A REPORT.

CONTRACTOR SHALL PREPARE CONTROLLER CHARTS DEPICTING VALVE CIRCUITS. INSTALL CHARTS IN THE CONTROLLER.

Limitations of Review and Approval of Landscape Improvement Plans

A review of this landscape plan is solely for the purpose of analyzing the proposed landscape elements such as but not limited to planting and irrigation in relation to the City of Perris' regulations, ordinances, and codes. Unproduced comments of other items shown on this plan set shall not be taken or assumed as approved. The review of project drawings and specifications by the City of Perris and their consultants is confined to a review only and does not relieve the Landscape Architect of Work, of their responsibilities for the project. Through the use of the approved plans for construction the Landscape Architect of Work indemnifies the City of Perris, its officer's, agents and employees to be held harmless from any and all liability, claims, negligent acts, errors or omissions of the Landscape Architect of Work, their employees, agents, or consultants.

Christopher Baldino 05/12/2026
City of Perris, Landscape Plan Checker Plan Review Date



BENCH MARK

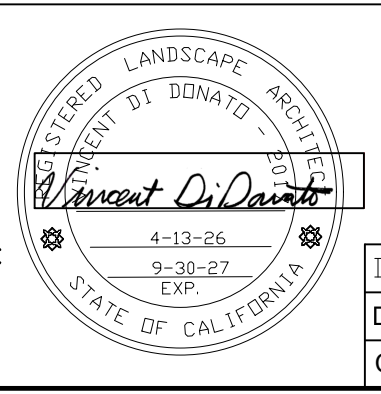
DESCRIPTION: _____

LOCATION: _____

VERTICAL DATUM: _____

HORIZONTAL DATUM: _____

ALHAMBRA GROUP
LANDSCAPE ARCHITECTURE
California license #2017
RECREATION FACILITIES PLANNING
41635 Enterprise Circle North, Suite C
TEMECULA, CA 92590 (951) 296-6802
CELL PHONE (951) 970-6156
EMAIL vince@alhambragroup.net



DATE: 4-13-26
DRAWN BY: VD
CHECKED BY: VD

DATE	BY	MARK	DESCRIPTION	APPR. DATE	EMWD

ACCEPTED BY: EASTERN MUNICIPAL WATER DISTRICT

DEPARTMENT	ACCEPTANCE	DATE
DS PLAN CHECKER		
OPERATIONS		
ENGINEERING		
DC ENGINEER		

CITY OF PERRIS

SOUTH PERRIS FIRE STATION WATER USE IMPROVEMENTS RWIP SHEET INDEX MAP

	RWIP#
DOPP:	RWUE16932
COORD. 30-D	RWIP#
I.D. 98	SHT. 2 OF 11
S.A. 35	D-

I AGREE TO COMPLY WITH THE CRITERIA OF ORDINANCE (MMC 15.04) AND TO APPLY THEM FOR THE EFFICIENT USE OF WATER IN THE IRRIGATION DESIGN PLAN.

Vincent DiDonato 4-13-26
 APPLICANT/ LANDSCAPE ARCHITECT DATE

PRIOR TO BACKFILLING THE PARTY RESPONSIBLE FOR IRRIGATION INSTALLATION SHALL CONDUCT A PRELIMINARY FIELD INSPECTION OF THE IRRIGATION SYSTEM.

AFTER PROJECT INSTALLATION AN AUDIT SHALL BE CONDUCTED BY A CERTIFIED IRRIGATION AUDITOR AND FINDINGS STATED IN A REPORT.

EMWD STANDARD NOTE

CONSTRUCTION NOTE
 EASTERN MUNICIPAL WATER DISTRICT REQUIRES THAT A PRE-CONSTRUCTION CONFERENCE BE SCHEDULED PRIOR TO ANY CONSTRUCTION BY CALLING EASTERN MUNICIPAL WATER DISTRICT RECYCLED WATER PROGRAM COORDINATOR AT (951) 928-3777, EXTENSION 4412.

INSTALLATION NOTES
 1. THE RECYCLED WATER IRRIGATION SYSTEM SHOWN ON THESE PLANS SHALL BE CONSTRUCTED IN ACCORDANCE WITH THE MOST RECENT EDITION OF THE EASTERN MUNICIPAL WATER DISTRICT STANDARDS AND SPECIFICATIONS FOR DEVELOPER'S PROJECTS.
 2. HOSE BIBS ARE STRICTLY PROHIBITED ON RECYCLED WATER IRRIGATION SYSTEMS. POTABLE QUICK COUPLERS ARE NOT ALLOWED WITHIN THE RECYCLED WATER IRRIGATION AREA.

COLOR CODING NOTES
 3. ALL IRRIGATION EMISSION DEVICES, SUCH AS SPRAY HEADS, ROTORS, BUBBLERS, DRIP EMITTERS, OR DRIP ASSEMBLIES SHALL BE IDENTIFIED WITH PURPLE IDENTIFICATION BODIES, COLLARS, CAPS, CONNECTORS, ADAPTERS, ETC. TO PERMANENTLY LABEL THE COMPONENTS AS EMITTING RECYCLED IRRIGATION WATER. THE PURPLE IDENTIFICATION SHALL BE EXPOSED TO THE SURFACE.
 4. ALL IRRIGATION RISERS, DRIP LINE, AND COMPONENTS THAT ARE NOT AVAILABLE FROM THE MANUFACTURE WITH PURPLE RECYCLED WATER IDENTIFICATION SHALL BE LABELED WITH RECYCLED WATER DECALS OR STICKERS.
 5. ALL IRRIGATION COMPONENTS AND VALVES MUST HAVE A RECYCLED WATER ID TAG AND A VALVE ID TAG IN A PURPLE VALVE BOX WITH A PURPLE LID. THE PURPLE LID SHALL BE HEAT BRANDED WITH THE VALVE LABEL.

RECYCLED WATER AND POTABLE WATER SEPARATION CLEARANCE NOTE
 THE RECYCLED WATER IRRIGATION MAINLINE IS SHOWN DIAGRAMMATICALLY FOR CLARITY PURPOSES ONLY. THE RECYCLED WATER IRRIGATION MAINLINE MUST:

- BE INSTALLED WITH A 4' (FOOT) MINIMUM HORIZONTAL CLEARANCE FROM ALL POTABLE WATERLINES AND FIRE LINES.
- BE INSTALLED WITH A 1' (FOOT) OF VERTICAL CLEARANCE AND BE LOCATED UNDER ALL POTABLE WATERLINES AND FIRE LINES.
- WHERE THE RECYCLED WATER IRRIGATION MAINLINES MUST BE INSTALLED ABOVE THE POTABLE WATERLINE, A 4" (INCH) MINIMUM VERTICAL CLEARANCE MUST BE MAINTAINED AND THE RECYCLED WATER IRRIGATION MAINLINE MUST BE INSTALLED IN A CONTINUOUS SLEEVE (PVC CLASS 200 PIPE MINIMUM) WHICH EXTENDS A MINIMUM OF 10' (FEET) EACH SIDE OF THE POTABLE WATERLINE OR FIRE LINE.

DRIP SYSTEM PRESSURE LOSS CALCS.

VALVE A3 @ 8 G.P.M. 78.0 P.S.I.
 PRESSURE AVAILABLE AT METER : 78.0 P.S.I.
 REGULATED PRESSURE: 60.0 P.S.I.

EQUIPMENT	SIZE	P.S.I. LOSS
METER	1"	(0.3)
STRAINER	2"	(5.0)
MASTER VALVE	1-1/2"	(1.5)
FLOW SENSOR	1"	(2.0)
BALL VALVE	1-1/2"	(.1)
R.C.V.	1"	(1.5)
MAIN LINE	1-1/2"	(0.1)
ELEVATION CHANGE	6'	(3.0)

P.S.I. LOSS BEFORE PRESSURE REGULATOR: (13.5 P.S.I.)
 PRESSURE AVAILABLE AT R.C.V. BEFORE PR: 46.5 P.S.I.
 REGULATOR REDUCES PRESSURE TO: 40.0 P.S.I.

EQUIPMENT	SIZE	P.S.I. LOSS
LATERAL LINES	VARIES	(2.0)
EMITTERS (OPERATING)	N/A	(25.0)
PRESSURE 25 PSI		
ELEVATION CHANGE	0'	(0.0)

P.S.I. LOSS AFTER PRESSURE REGULATOR: (27.0 P.S.I.)
 TOTAL RESIDUAL PRESSURE: 13.0 P.S.I.

CONTRACTOR SHALL PREPARE CONTROLLER CHARTS DEPICTING VALVE CIRCUITS, INSTALL CHARTS IN THE CONTROLLER.

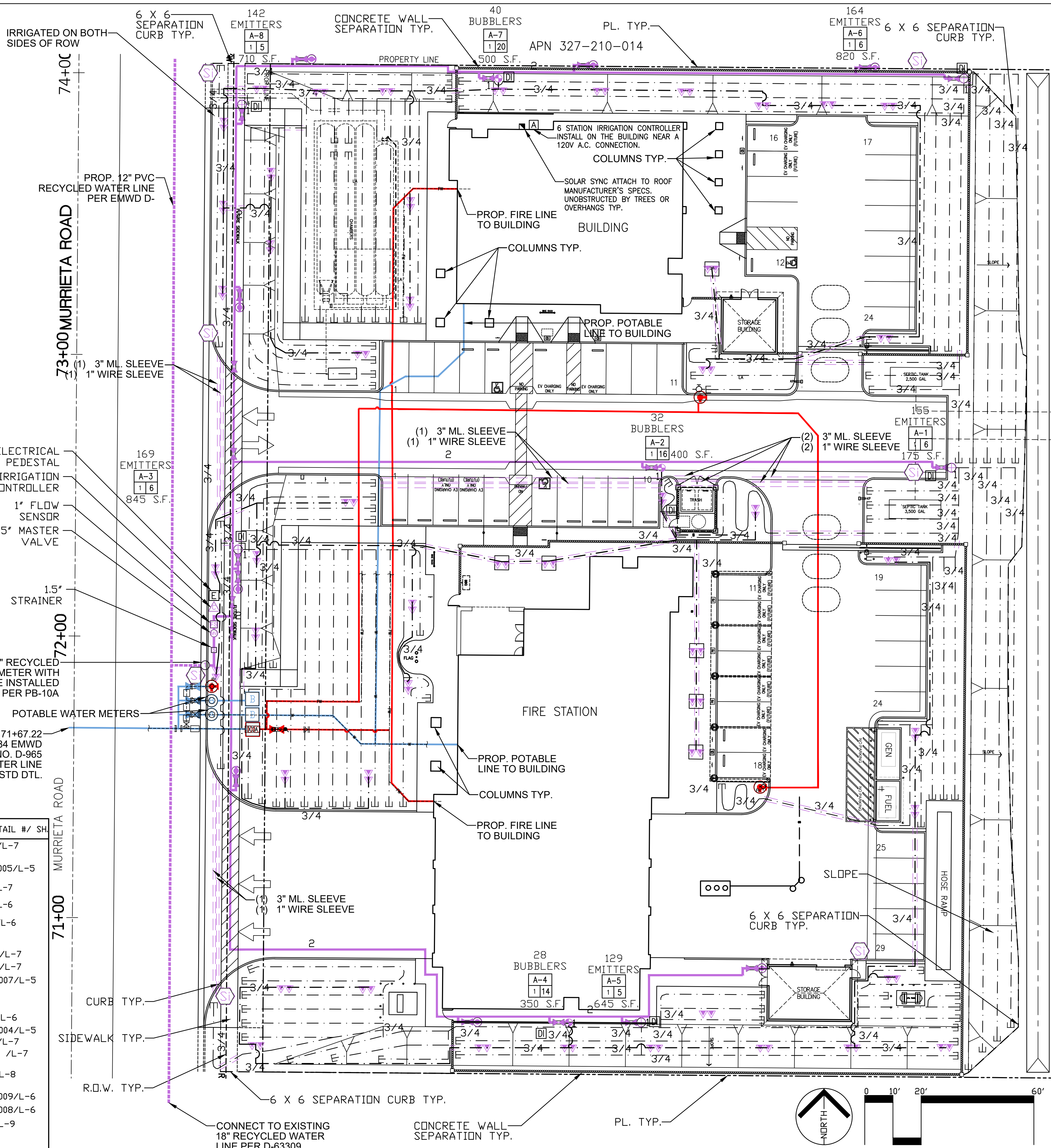
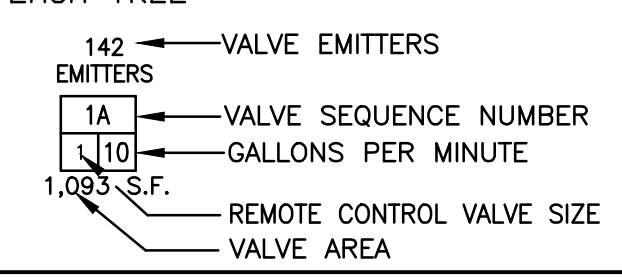
Limitations of Review and Approval of Landscape Improvement Plans

A review of this landscape plan is solely for the purpose of analyzing the proposed landscape elements such as but not limited to planting and irrigation in relation to the City of Perris' regulations, ordinances, and codes. Unproduced comments of other items shown on this plan set shall not be taken or assumed as approved. The review of project drawings and specifications by the City of Perris and their consultants is confined to a review only and does not relieve the Landscape Architect of Work, of their responsibilities for the project. Through the use of the approved plans for construction the Landscape Architect of Work indemnifies the City of Perris, its officers, agents and employees to be held harmless from any and all liability, claims, negligent acts, errors or omissions of the Landscape Architect of Work, their employees, agents, or consultants.

Christopher Baldino 05/12/2026
 City of Perris, Landscape Plan Checker Plan Review Date

IRRIGATION LEGEND

SYMBOL	MANUFACTURER	MODEL NO.	REMARKS - SEE SHEET L-5 - L-8 FOR DETAILS AND L-9 FOR IRRIGATION SPECIFICATIONS	DETAIL #/ SH
	WEATHER TRAK	ET PRD3	12 STATION AUTOMATIC CONTROLLER IN A STAINLESS STEEL PEDESTAL NEAR A 120V A.C. ELECTRICAL PEDESTAL.	18/L-7
	YARDNEY		2" SCREEN FILTER FACTORY POWER COATED PURPLE W/ FLANGES, 80 MESH FILTER IN SENTRY PRODUCTS S.H.S.C. ENCLOSURE. PROVIDE (1) EXTRA 80 MESH FILTER PER BASKET STRAINER WITH ENCLOSURE ON CONCRETE PAD.	A-005/L-5
	FLO-CONTROL	1520-10/1012-10	SWING TYPE OR SPRING TYPE CHECK VALVE. USE SWING CHECK WHEN RCV IS AT THE TOE OF THE SLOPE, USE SPRING CHECK WHEN RCV IS AT THE TOP. LINE SIZE BY LATERAL LINE.	8/L-7
	RAINBIRD	XCZ-100-PRB-COM-R	1" REMOTE CONTROL VALVE KIT	4/L-6
	RAINBIRD	PRS-D-1	1" TREE BUBBLER VALVE	12/L-6
	RAINBIRD	PESB-R	1-1/2" MASTER CONTROL VALVE NORMALLY CLOSED.	118/L-7
	CST	CST-1	1" CST FLOW METER	119/L-7
	HUNTER	HW-44LRC-AW-R	1" QUICK COUPLING VALVE W/ PURPLE CAP FOR RECYCLED	A-007/L-5
	RAINBIRD	XBT-20PC	2 GPH DRIP EMITTER W/ DIFFUSOR (LOW WATER - 1 EMITTER FOR EACH SHRUB OR GROUND COVER)	
	NIBCO	T-580	BRASS BALL VALVE LINE SIZE WITH PURPLE HANDLE - TYPICAL	11/L-6
	PAC. PLASTICS	SCH 40	PURPLE PRESSURE TYPE MAINLINE	A-004/L-5
	PAC. PLASTICS	SCH 40	PURPLE NON-PRESSURE TYPE SLEEVE	17/L-7
	PAC. PLASTICS	SCH 40	PURPLE NON-PRESSURE LATERAL LINE 12" BELOW GRADE. INSTALL 12" BELOW GRADE-SEE DETAILS	113 /L-7
	RAINBIRD	1402 BUBBLER	INSTALL 1 BUBBLER IN EACH RWSBC DEEP WATER KIT AND 2 KITS PER EACH TREE	8/L-8
	DURA	SCH 80	PURPLE MANUAL FLUSH VALVE PER EMWD REQUIREMENTS	A-009/L-6
	EMWD SIGN	PER EMWD	EMWD SIGN PER EMWD REQUIREMENTS	A-008/L-6
	RAINBIRD	OPERIND	DRIP INDICATOR W/ PURPLE CAP, INSTALL IN PLANTERS, SEE DETAIL	D/L-9



DIG ALERT
 Call: TOLL FREE 1-800-227-2600 OR 811
 TWO FULL WORKING DAYS BEFORE YOU DIG

BENCH MARK DESCRIPTION:
 LOCATION:
 VERTICAL DATUM:
 HORIZONTAL DATUM:

ALHAMBRA GROUP
 LANDSCAPE ARCHITECTURE
 California license #2017
 RECREATION FACILITIES PLANNING
 41635 Enterprise Circle North, Suite C
 TEMECULA, CA 92590 (951) 296-6802
 CELL PHONE (951) 970-6156
 EMAIL vince@alhambragroup.net

REGISTERED LANDSCAPE ARCHITECT
 VINCENT DI DONATO - 2017
 4-13-26
 4-30-27
 EXP.
 STATE OF CALIFORNIA

REVISIONS

DATE	BY	MARK	DESCRIPTION
DATE: 4-13-26			
DRAWN BY: VD			
CHECKED BY: VD			
DATE	BY	MARK	DESCRIPTION
	ENGINEER		

ACCEPTED BY:
 EASTERN MUNICIPAL WATER DISTRICT

EMWD ENGINEER	DATE

DEPARTMENT	ACCEPTANCE	DATE
DS PLAN CHECKER		
OPERATIONS		
ENGINEERING		
DC ENGINEER		

CITY OF PERRIS
 SOUTH PERRIS FIRE STATION
 WATER USE IMPROVEMENTS
 RWIP
IRRIGATION PLAN

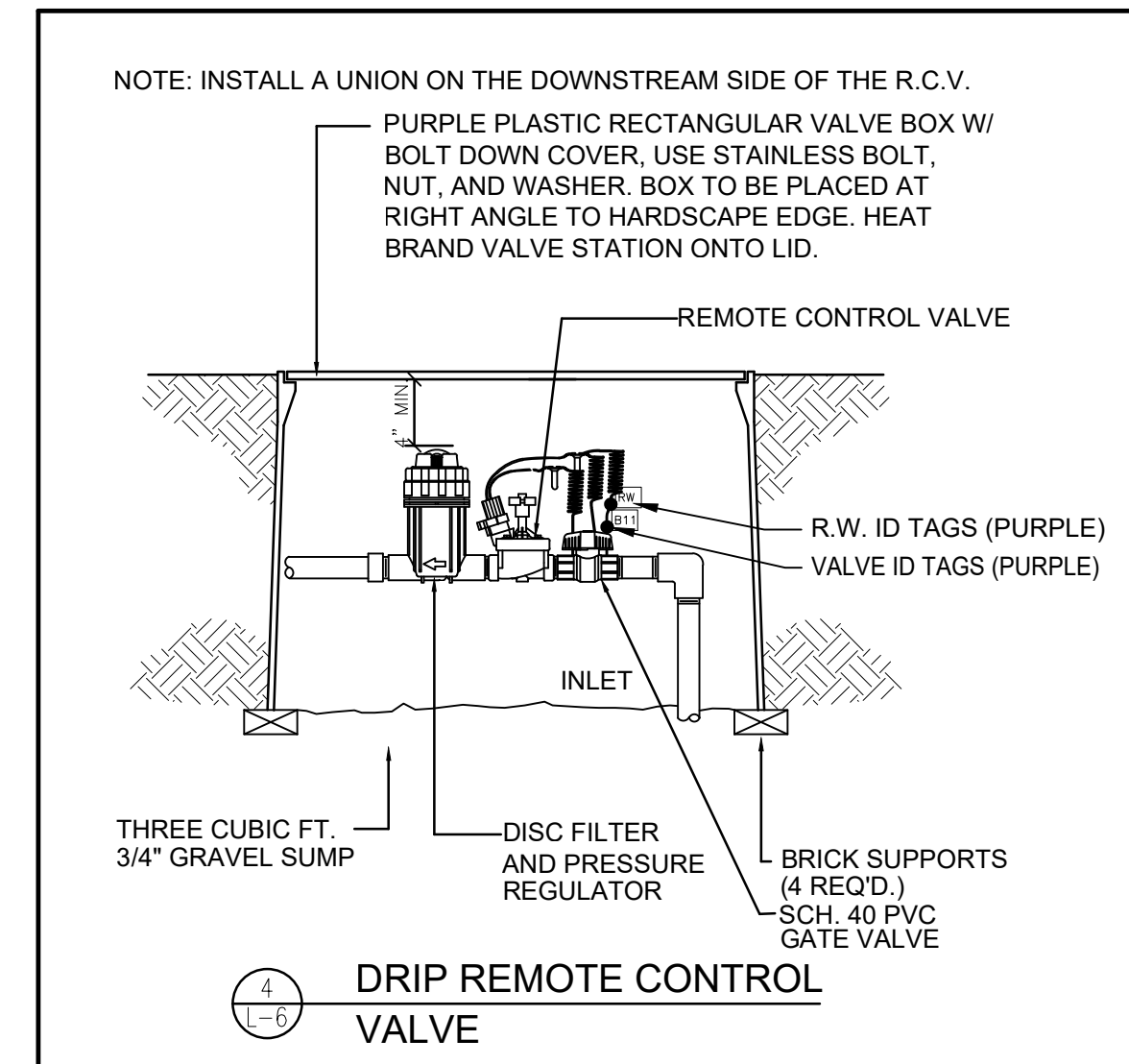
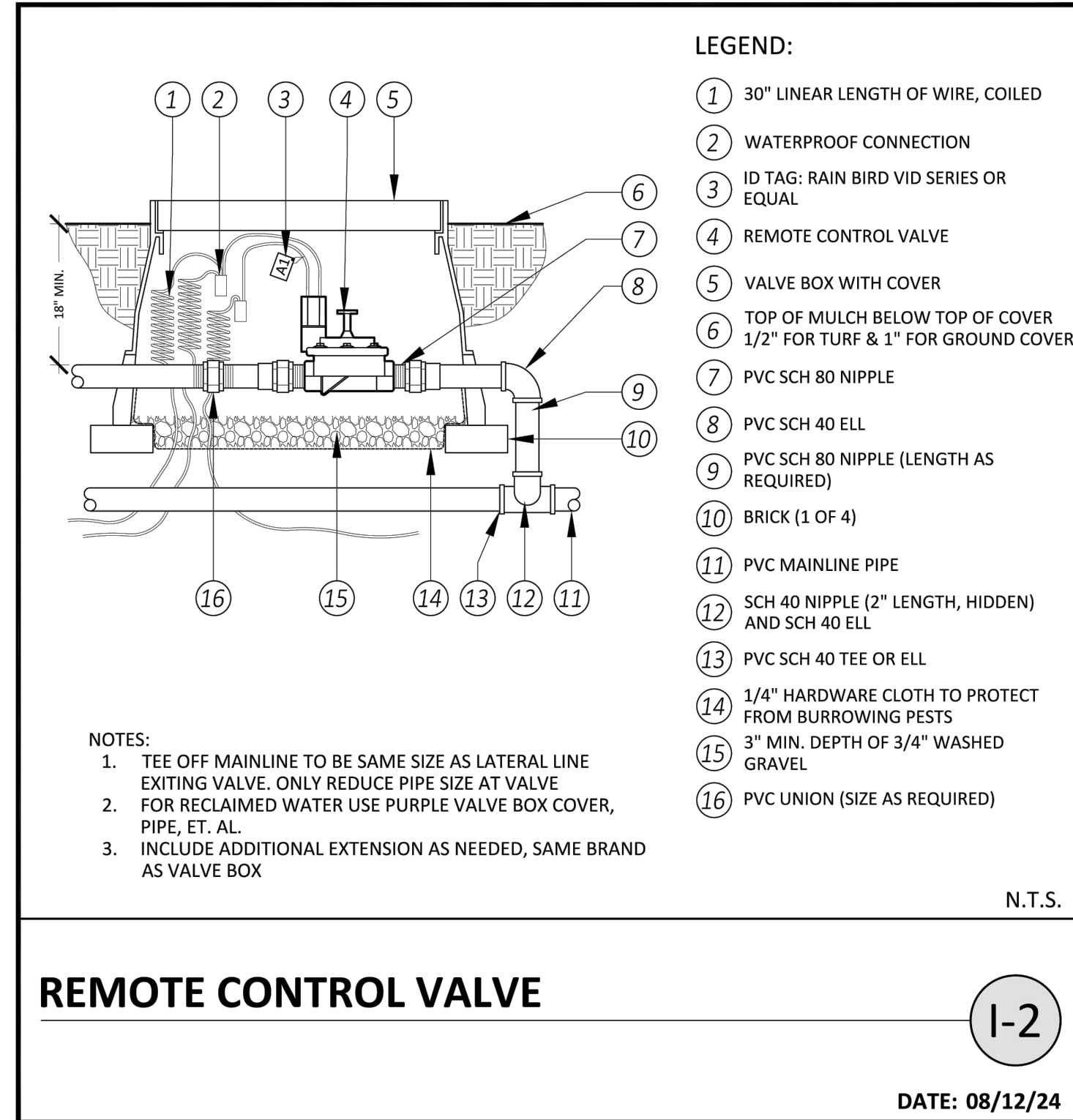
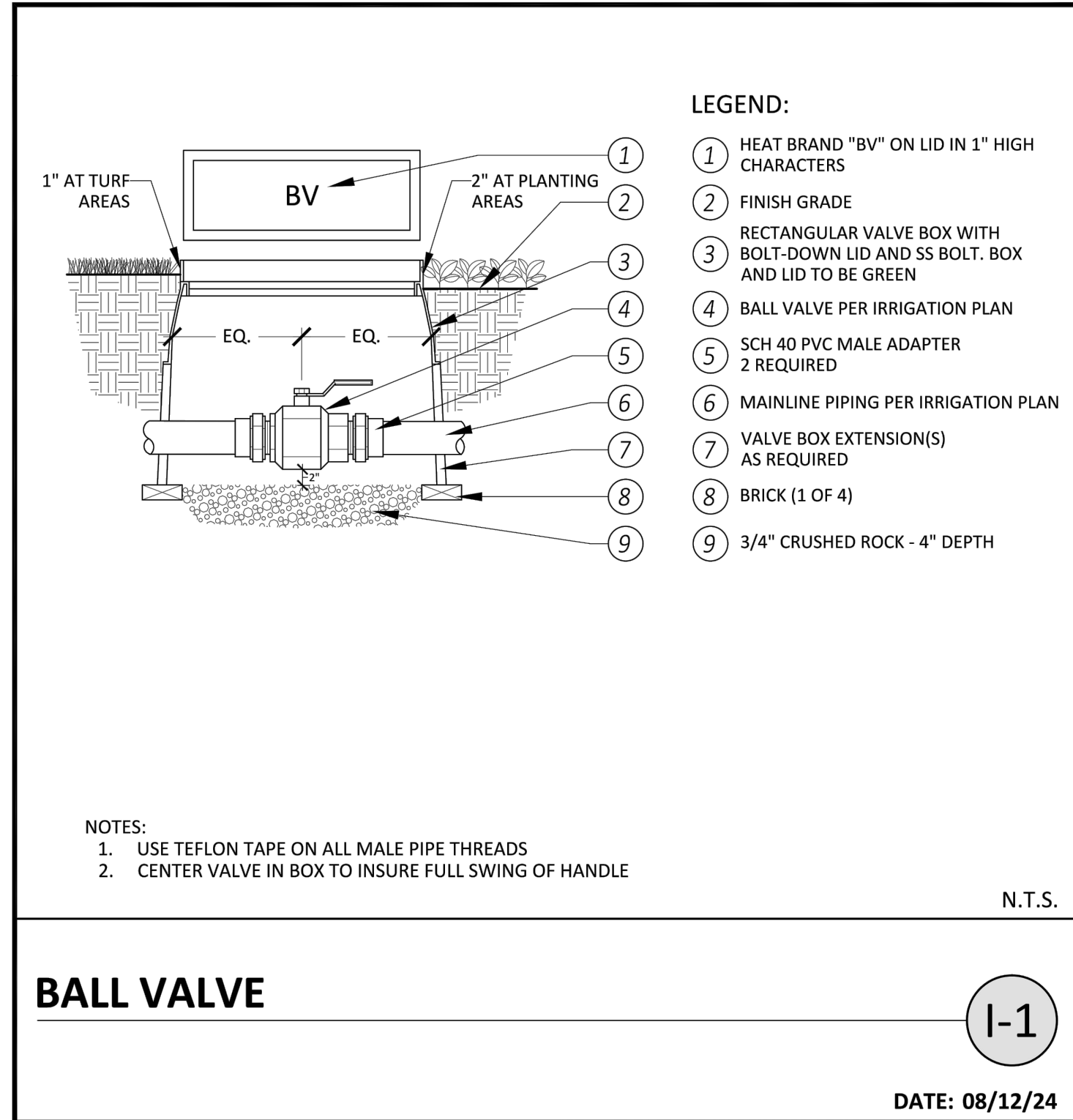
RWIP:	DOPP:	RWUE:
	30-D	16832
ID:	SA:	SHT. OF
98	35	3 OF 11



CITY OF PERRIS
DEVELOPMENT SERVICES DEPARTMENT
PLANNING DIVISION
135 NORTH D STREET, PERRIS, CA 92570-2200
(951) 943-5003

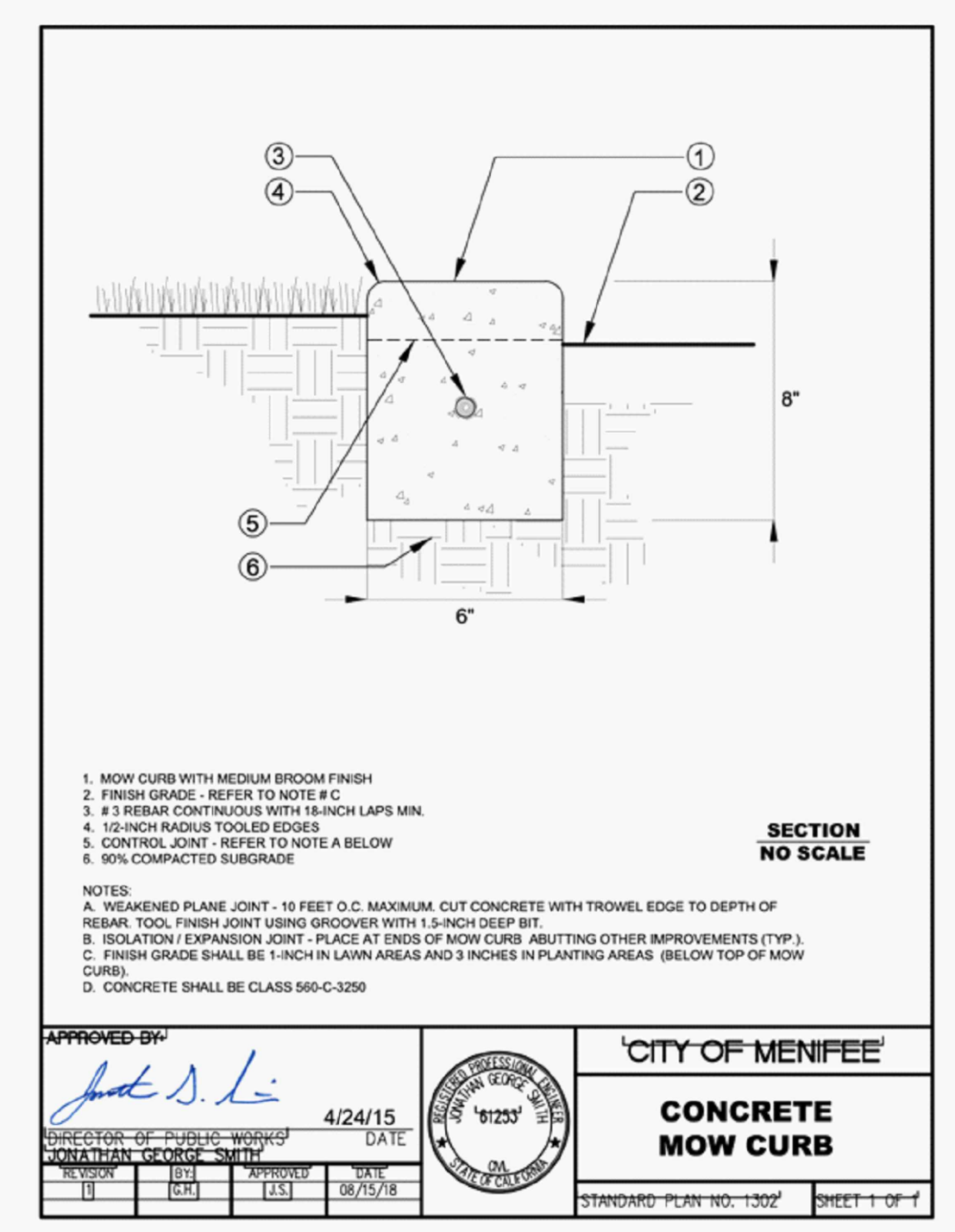
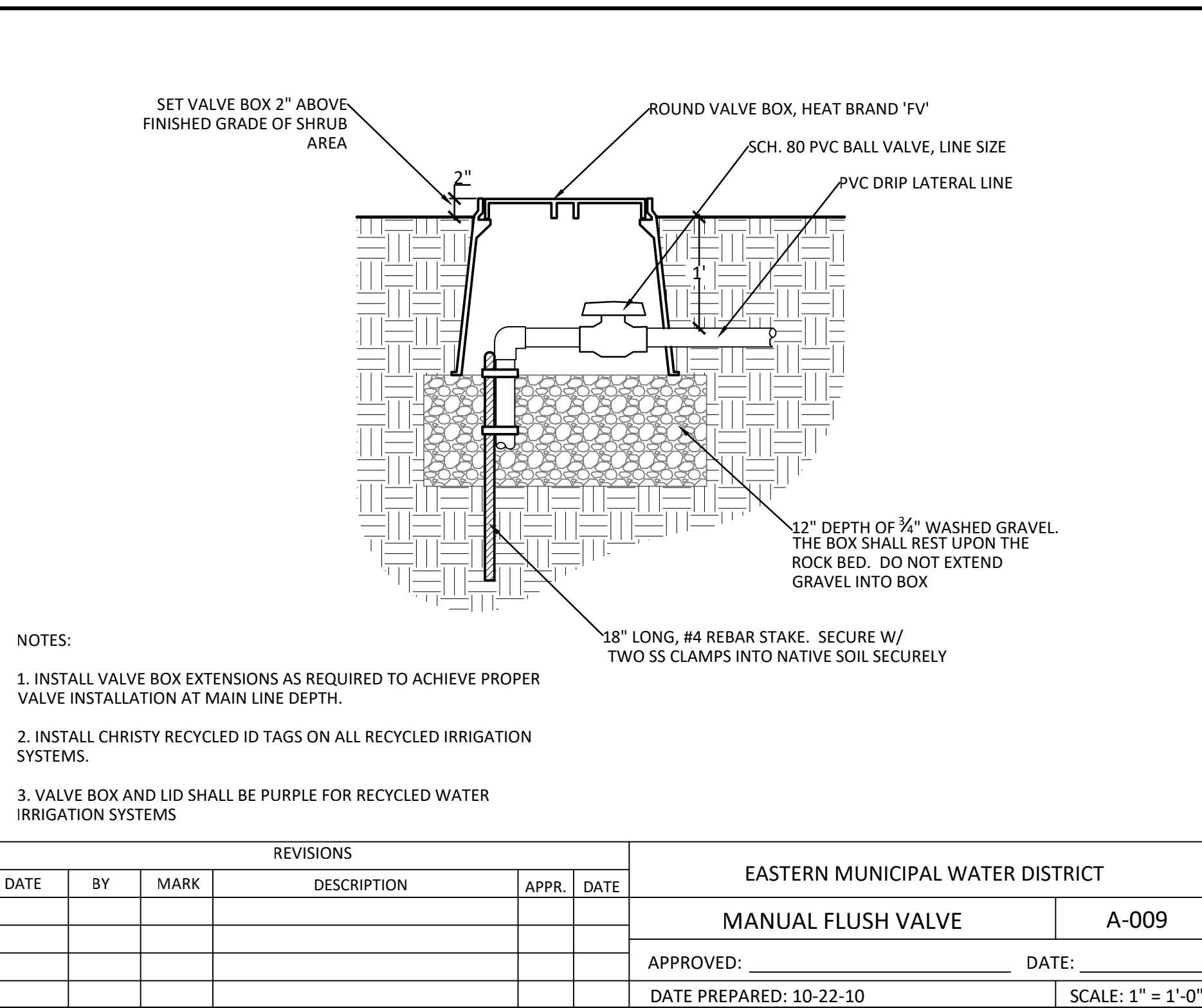
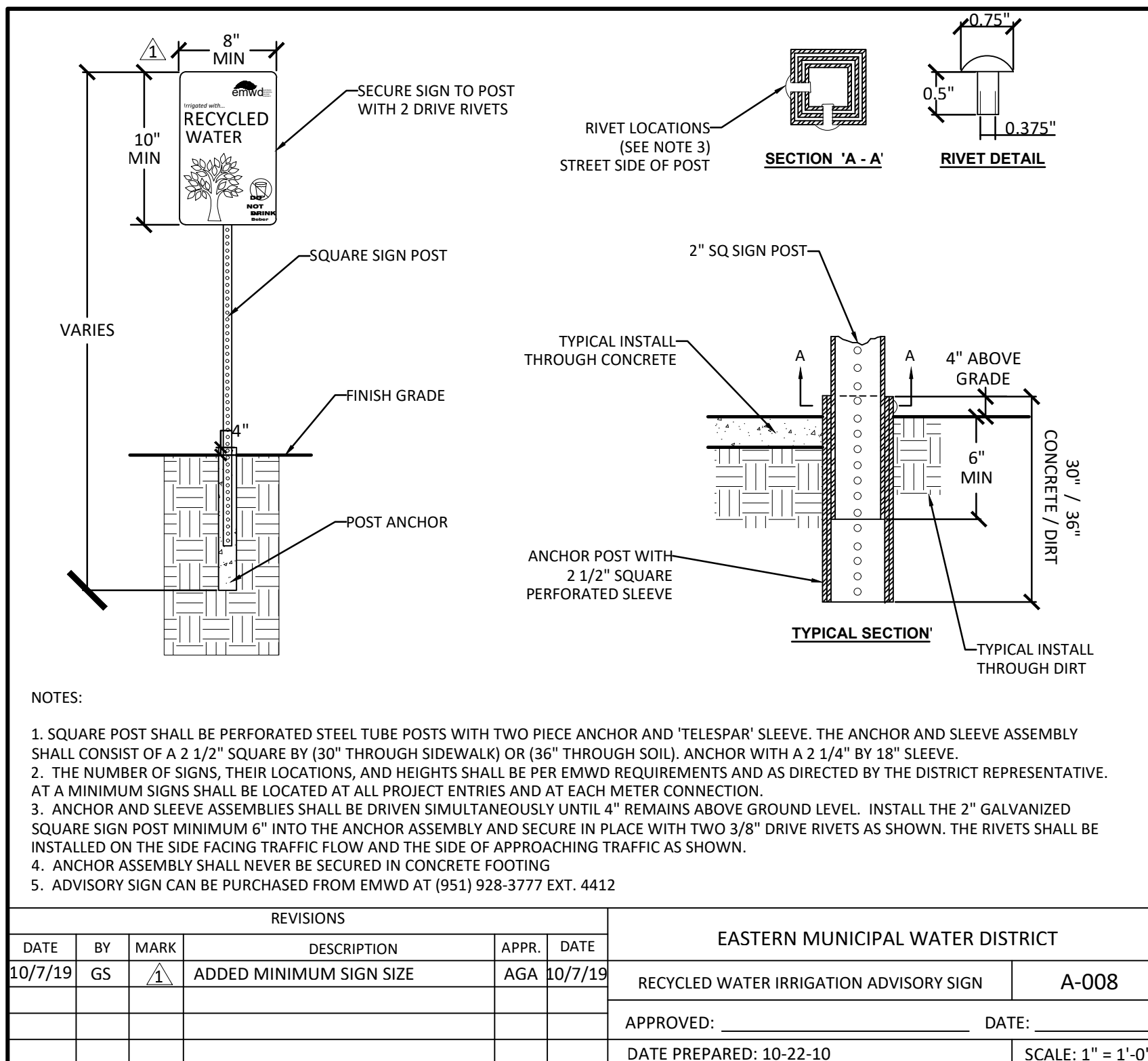


CITY OF PERRIS
DEVELOPMENT SERVICES DEPARTMENT
PLANNING DIVISION
135 NORTH D STREET, PERRIS, CA 92570-2200
(951) 943-5003



IRRIGATION DETAIL

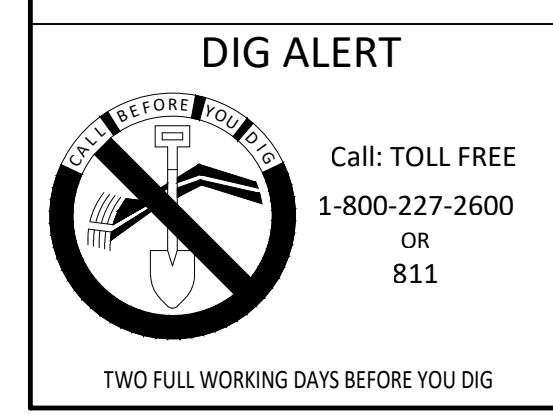
IRRIGATION DETAIL



Limitations of Review and Approval of Landscape Improvement Plans

A review of this landscape plan is solely for the purpose of analyzing the proposed landscape elements such as but not limited to planting and irrigation in relation to the City of Perris regulations, ordinances, and codes. Unproduced comments of other items shown on this plan set shall not be taken or assumed as approved. The review of project drawings and specifications by the City of Perris and their consultants is confined to a review only and does not relieve the Landscape Architect of Work, of their responsibilities for the project. Through the use of the approved plans for construction the Landscape Architect of Work indemnifies the City of Perris, its officer's, agents and employees to be held harmless from any and all liability, claims, negligent acts, errors or omissions of the Landscape Architect of Work, their employees, agents, or consultants.

Christopher Balsino 05/12/2026
City of Perris, Landscape Plan Checker Plan Review Date



BENCH MARK

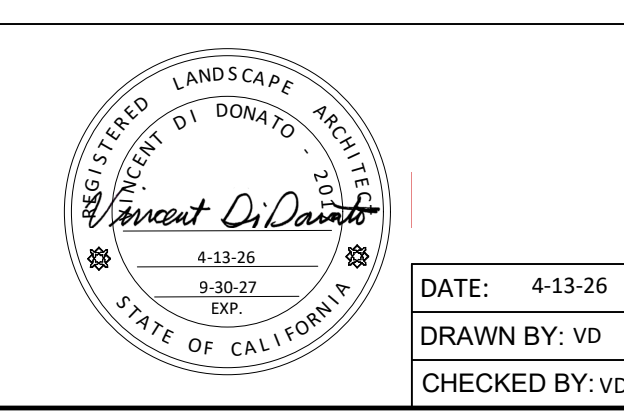
DESCRIPTION: _____

LOCATION: _____

VERTICAL DATUM: _____

HORIZONTAL DATUM: _____

ALHAMBRA GROUP
LANDSCAPE ARCHITECTURE
California license #2017
RECREATION FACILITIES PLANNING
41635 Enterprise Circle North, Suite C
TEMECULA, CA 92590 (951) 296-6802
CELL PHONE (951) 970-6156
EMAIL vince@alhambragroup.net



REVISIONS

DATE	BY	MARK	DESCRIPTION	APPR.	DATE
4-13-26	VD				

CHECKED BY: VD ENGINEER

ACCEPTED BY: EASTERN MUNICIPAL WATER DISTRICT

WATER RESOURCES & FACILITIES PLANNING

DEPARTMENT	ACCEPTANCE	DATE
PLAN CHECKER		
OPERATIONS		
DC ENGINEER		

CITY OF PERRIS

SOUTH PERRIS FIRE STATION
WATER USE IMPROVEMENTS
RWIP

IRRIGATION DETAILS

DOPP: _____ RWIP: 15897

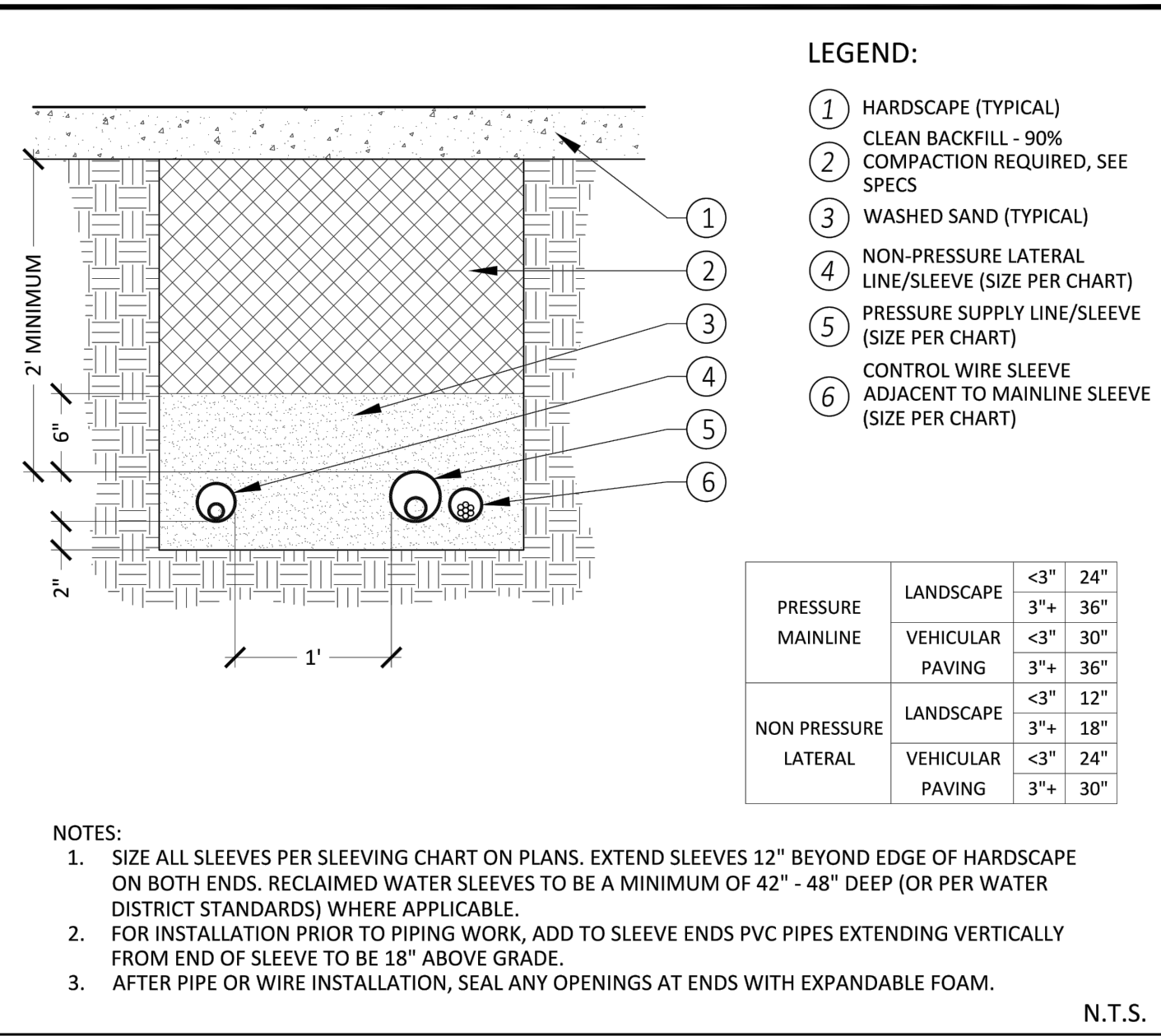
COORD. 30-D RWUP: _____

I.D. 98 SHT. 6 OF 11

S.A. 35 D-



CITY OF PERRIS
DEVELOPMENT SERVICES DEPARTMENT
PLANNING DIVISION
135 NORTH D STREET, PERRIS, CA 92570-2200
(951) 943-5003



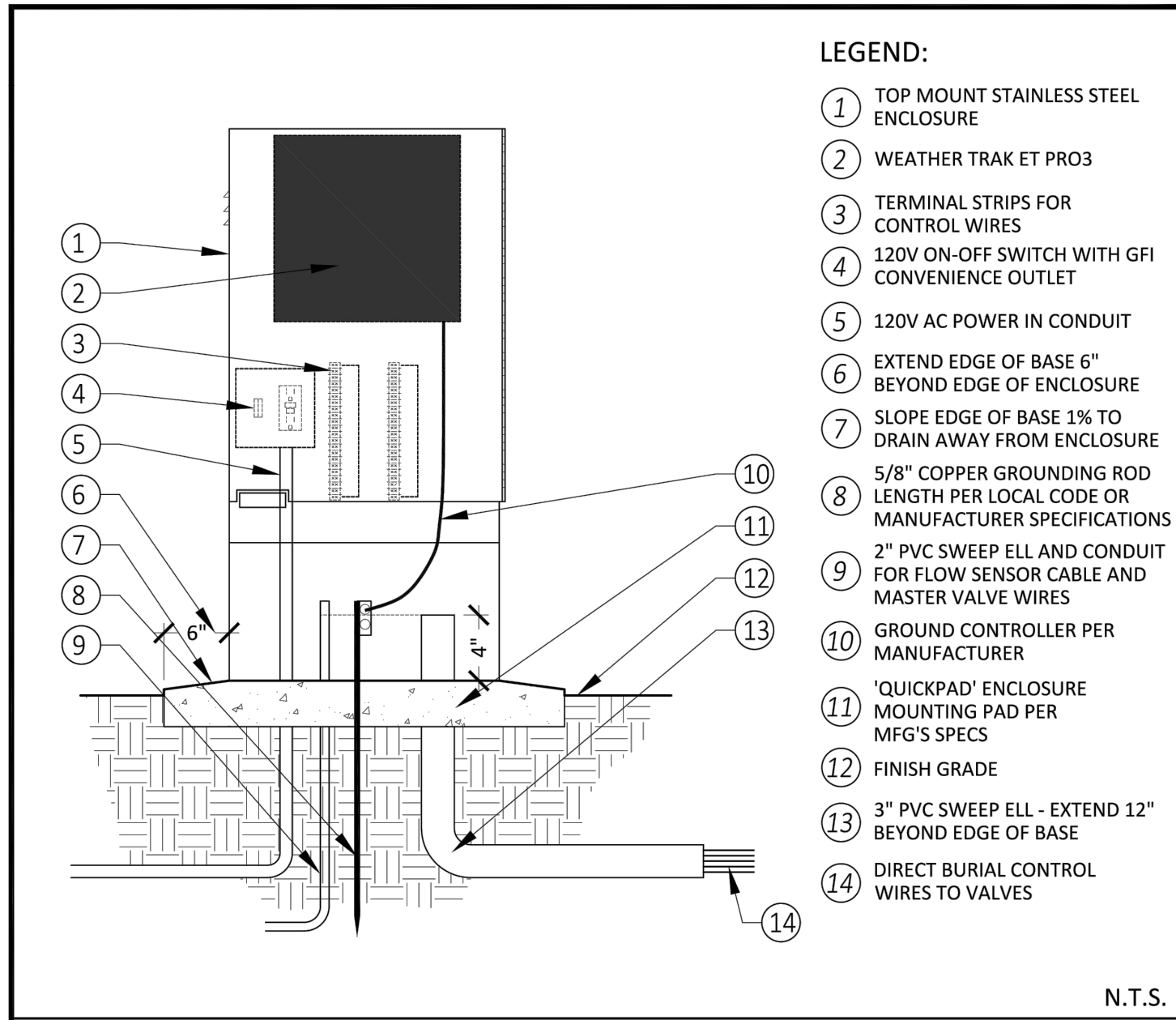
SLEEVING

I-7

DATE: 08/12/24



CITY OF PERRIS
DEVELOPMENT SERVICES DEPARTMENT
PLANNING DIVISION
135 NORTH D STREET, PERRIS, CA 92570-2200
(951) 943-5003



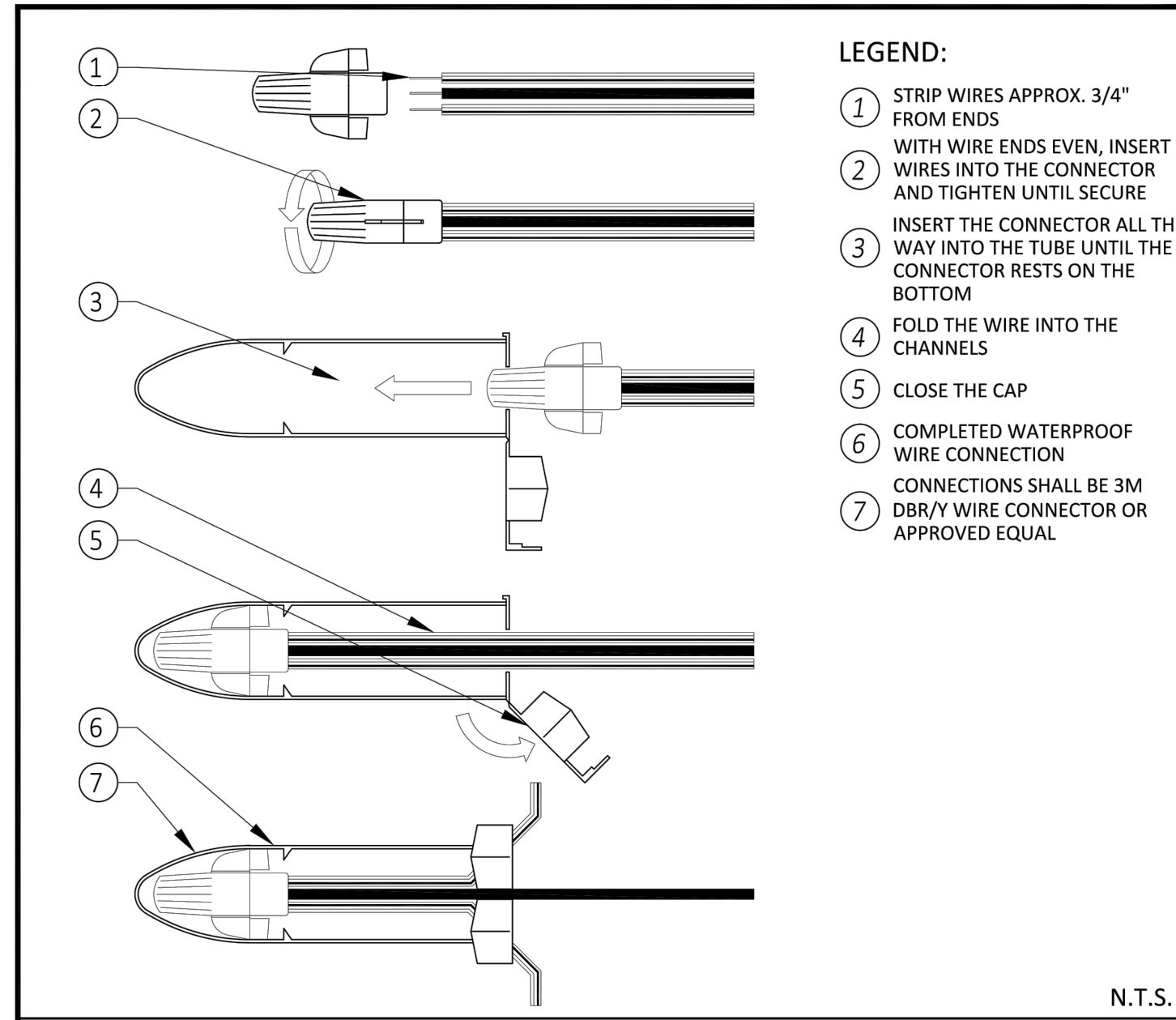
EXTERIOR CONTROLLER

I-8

DATE: 08/12/24



CITY OF PERRIS
DEVELOPMENT SERVICES DEPARTMENT
PLANNING DIVISION
135 NORTH D STREET, PERRIS, CA 92570-2200
(951) 943-5003



2-WIRE SYSTEMS

I-12

DATE: 08/12/24

Limitations of Review and Approval of Landscape Improvement Plans

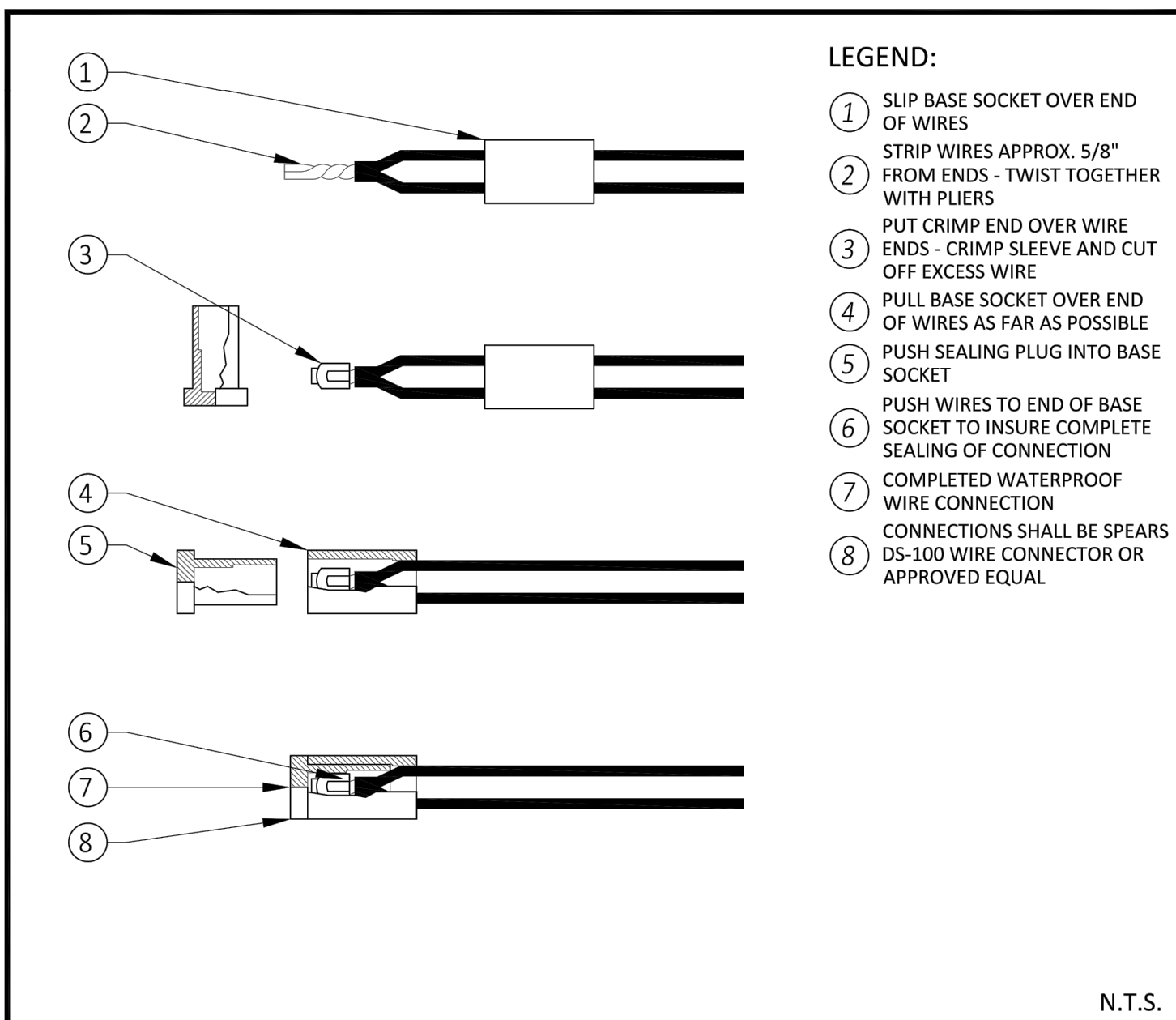
A review of this landscape plan is solely for the purpose of analyzing the proposed landscape elements such as but not limited to planning and irrigation in relation to the City of Perris' regulations, ordinances, and codes. Unproduced comments of other items shown on this plan set shall not be taken or assumed as approved. The review of project drawings and specifications by the City of Perris and their consultants is confined to a review only and does not relieve the Landscape Architect of Work of their responsibilities for the project. Through the use of the approved plans for construction the Landscape Architect of Work indemnifies the City of Perris, its officers, agents and employees to be held harmless from any and all liability, claims, negligent acts, errors or omissions of the Landscape Architect of Work, their employees, agents, or consultants.

Christopher Baldino 05/12/2026
City of Perris, Landscape Plan Checker Plan Review Date

IRRIGATION DETAIL



CITY OF PERRIS
DEVELOPMENT SERVICES DEPARTMENT
PLANNING DIVISION
135 NORTH D STREET, PERRIS, CA 92570-2200
(951) 943-5003



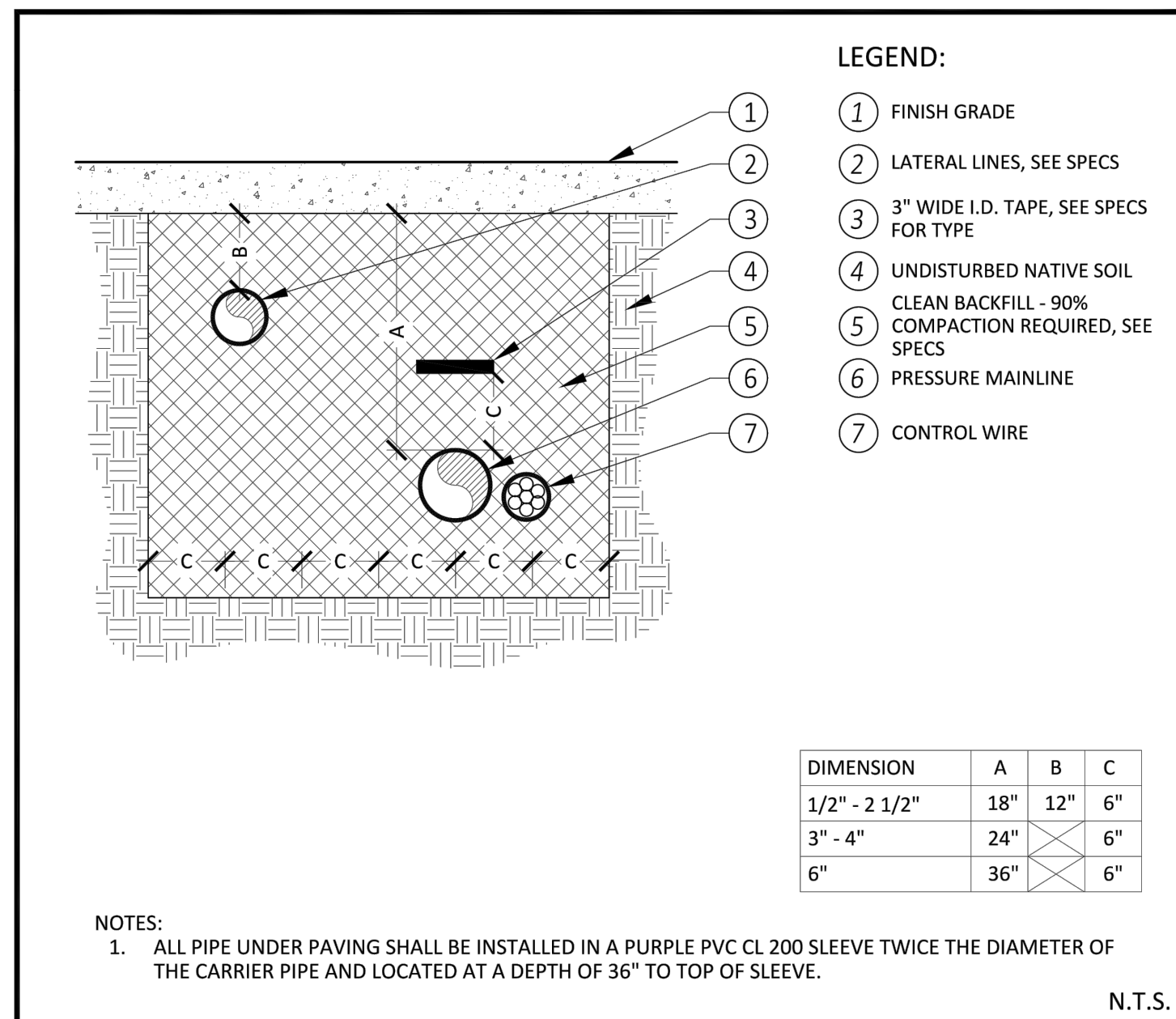
CONVENTIONAL COMMON/SIGNAL WIRE

I-12

DATE: 08/12/24



CITY OF PERRIS
DEVELOPMENT SERVICES DEPARTMENT
PLANNING DIVISION
135 NORTH D STREET, PERRIS, CA 92570-2200
(951) 943-5003



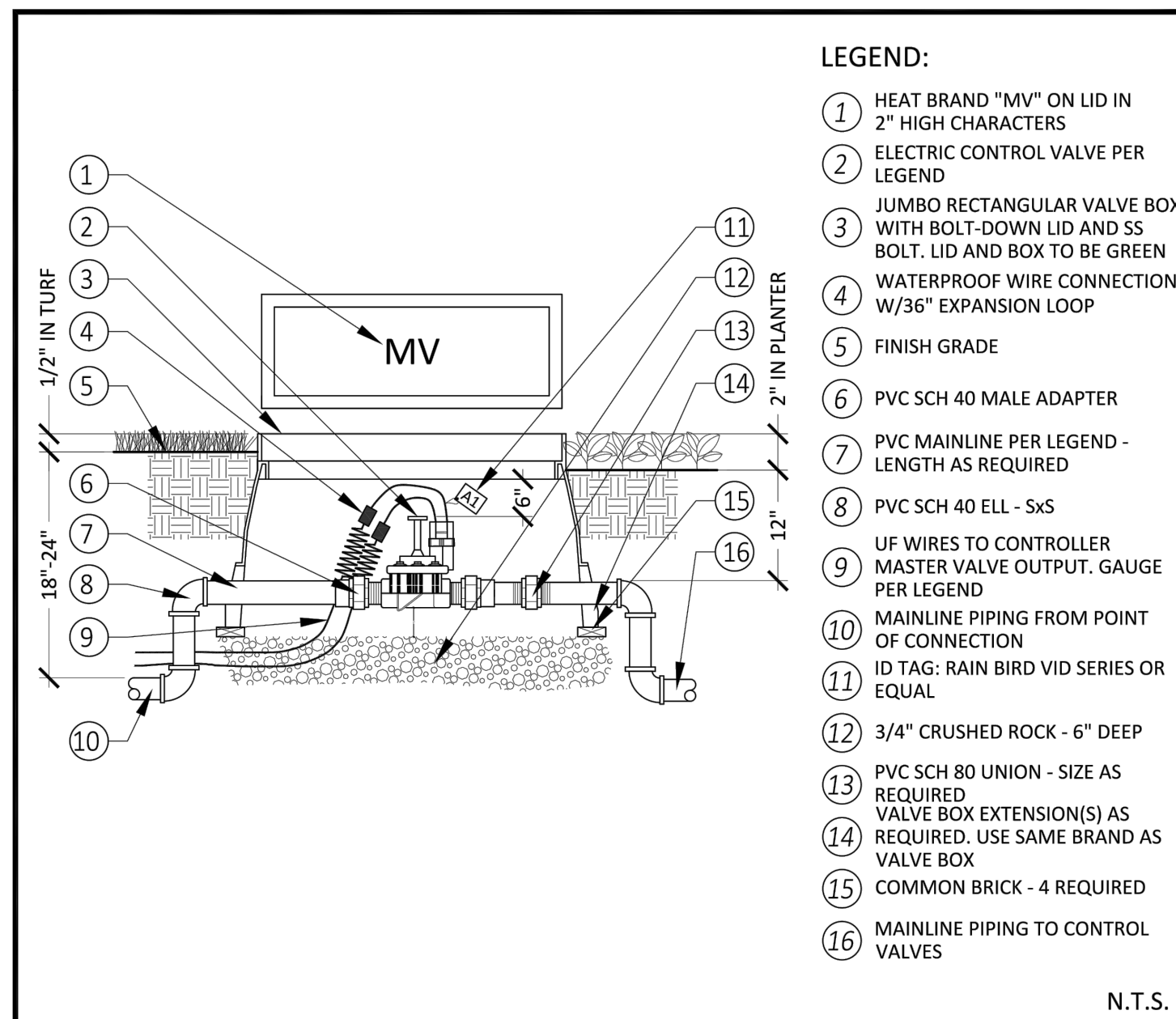
TRENCHING

I-13

DATE: 08/12/24



CITY OF PERRIS
DEVELOPMENT SERVICES DEPARTMENT
PLANNING DIVISION
135 NORTH D STREET, PERRIS, CA 92570-2200
(951) 943-5003



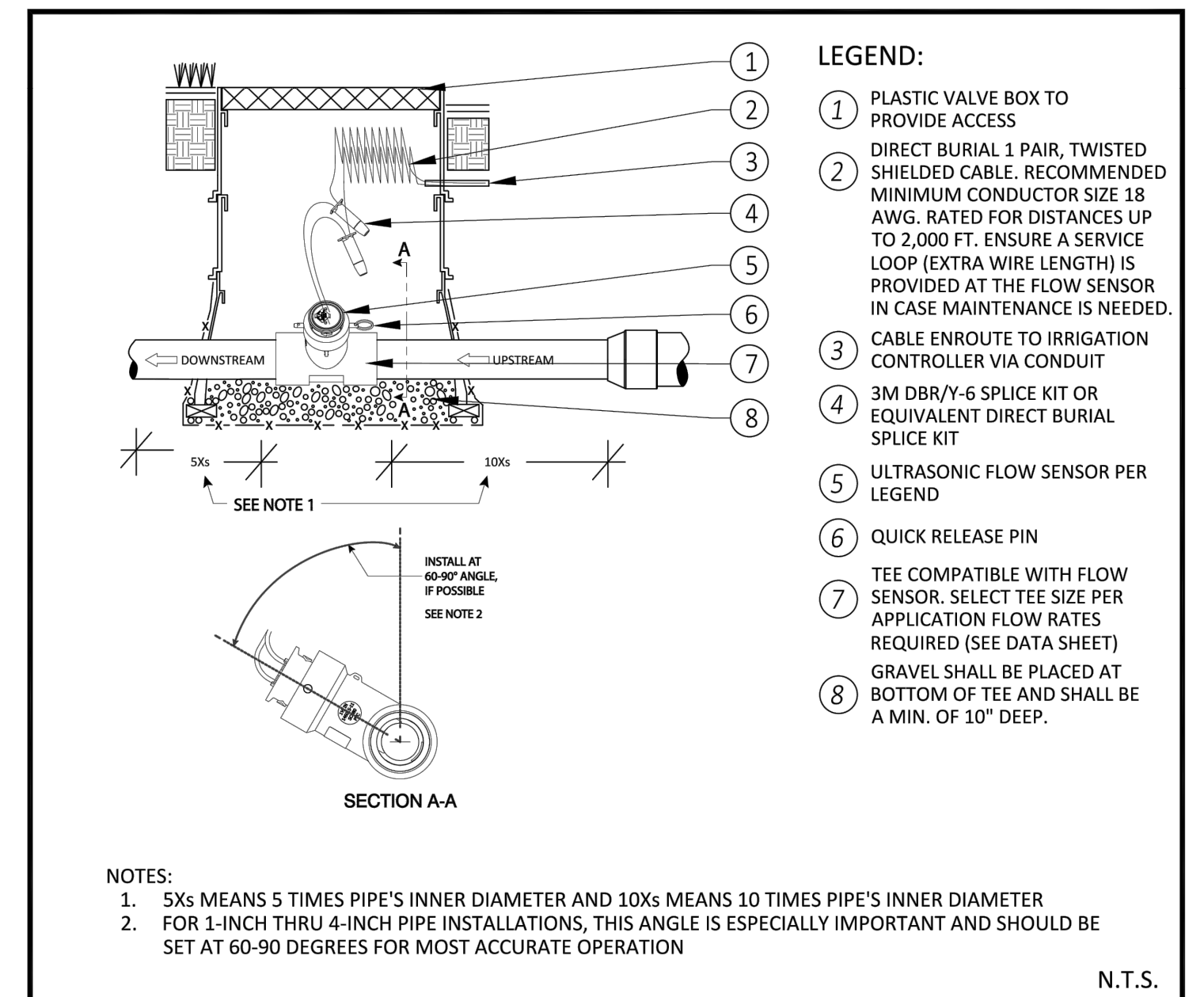
MASTER VALVE

I-18

DATE: 08/12/24



CITY OF PERRIS
DEVELOPMENT SERVICES DEPARTMENT
PLANNING DIVISION
135 NORTH D STREET, PERRIS, CA 92570-2200
(951) 943-5003



FLOW SENSOR

I-19

DATE: 08/12/24

DIG ALERT

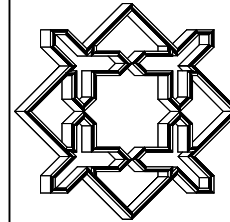


Call: TOLL FREE
1-800-227-2600
OR
811

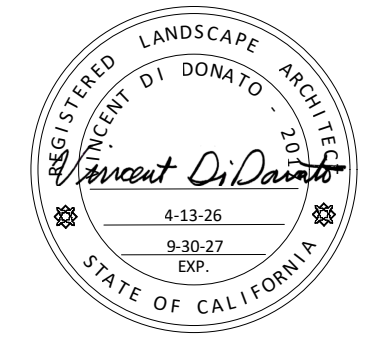
TWO FULL WORKING DAYS BEFORE YOU DIG

BENCH MARK

DESCRIPTION: _____
LOCATION: _____
VERTICAL DATUM: _____
HORIZONTAL DATUM: _____



ALHAMBRA GROUP
LANDSCAPE ARCHITECTURE
California license #2017
RECREATION FACILITIES PLANNING
41635 Enterprise Circle North, Suite C
TEMECULA, CA 92590 (951) 296-6802
CELL PHONE (951) 970-6156
EMAIL vince@alhambragroup.net



DATE: 4-13-26
DRAWN BY: VD
CHECKED BY: VD

DATE	BY	MARK

DATE	BY	MARK

REVISIONS

NO.	DATE	DESCRIPTION

ACCEPTED BY:

DEPARTMENT	ACCEPTANCE	DATE

EASTERN MUNICIPAL WATER DISTRICT

DEPARTMENT	ACCEPTANCE	DATE

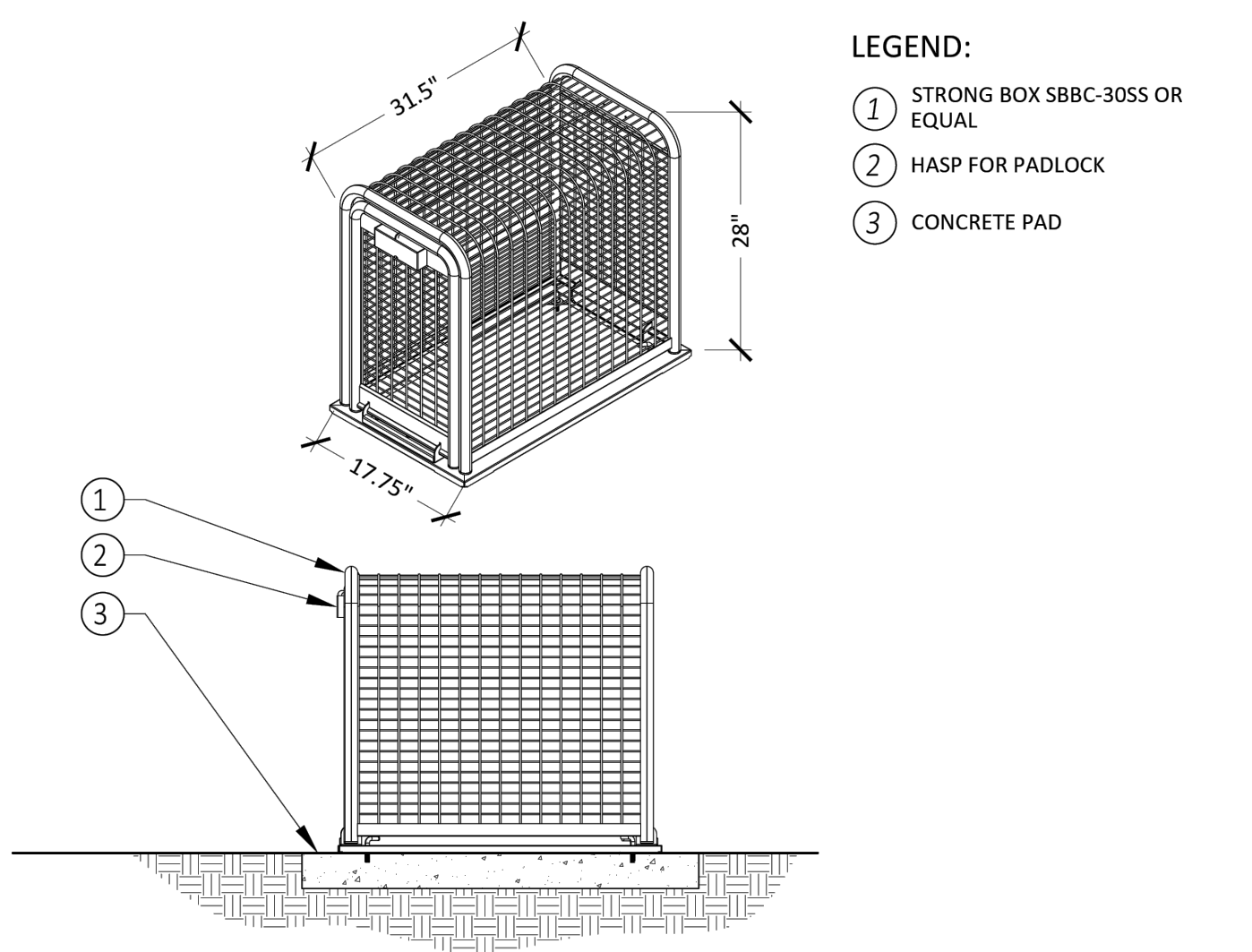
CITY OF PERRIS

SOUTH PERRIS FIRE STATION
WATER USE IMPROVEMENTS
RWIP
IRRIGATION DETAILS

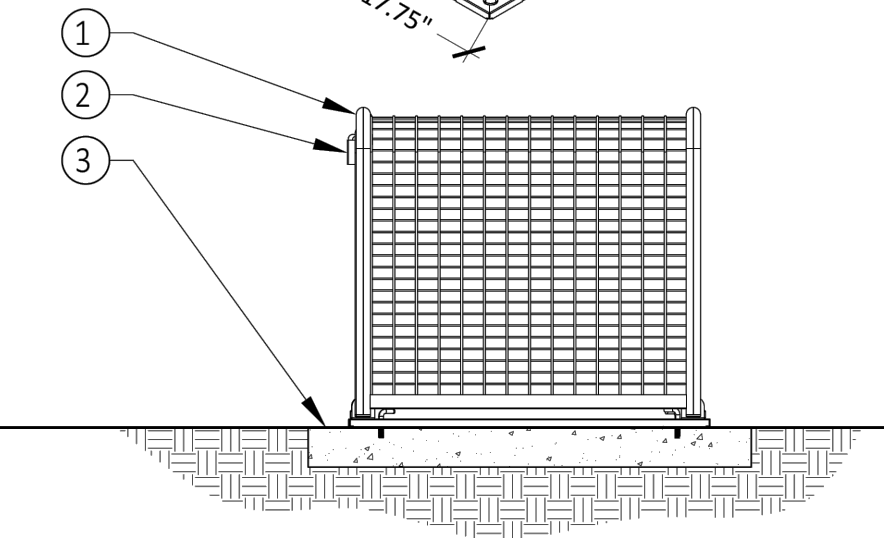
RWIP:	
DOPP:	RWIP: 16832
COORD. 30-D	RWIP:
I.D. 98	SHT. 7 OF 11
S.A. 35	D-



CITY OF PERRIS
DEVELOPMENT SERVICES DEPARTMENT
PLANNING DIVISION
135 NORTH D STREET, PERRIS, CA 92570-2200
(951) 943-5003



- LEGEND:**
- ① STRONG BOX SBBC-305S OR EQUAL
 - ② HASP FOR PADLOCK
 - ③ CONCRETE PAD



- NOTES:**
1. FINISH TO BE TWO COATS OF SEMI-GLOSS GREEN ENAMEL PAINT
 2. STAINLESS STEEL REQUIRED FOR ALL LANDSCAPE MAINTENANCE DISTRICT AREAS
 3. CONTRACTOR TO REQUEST LOCK FROM CITY INSPECTOR

N.T.S.

BACKFLOW PREVENTION ENCLOSURE

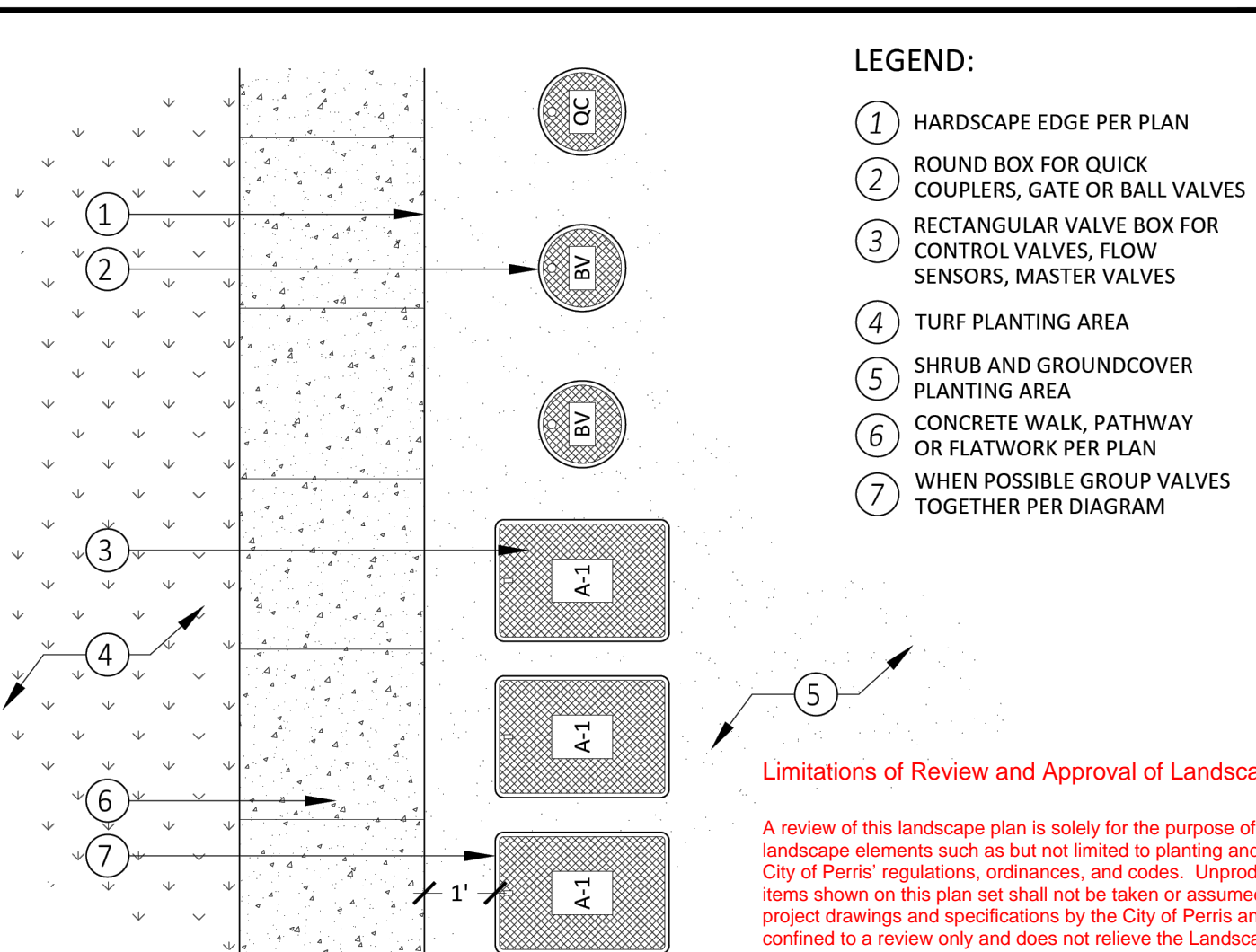
(I-21)

DATE: 08/12/24

IRRIGATION DETAIL



CITY OF PERRIS
DEVELOPMENT SERVICES DEPARTMENT
PLANNING DIVISION
135 NORTH D STREET, PERRIS, CA 92570-2200
(951) 943-5003



- LEGEND:**
- ① HARDSCAPE EDGE PER PLAN
 - ② ROUND BOX FOR QUICK COUPLERS, GATE OR BALL VALVES
 - ③ RECTANGULAR VALVE BOX FOR CONTROL VALVES, FLOW SENSORS, MASTER VALVES
 - ④ TURF PLANTING AREA
 - ⑤ SHRUB AND GROUND COVER PLANTING AREA
 - ⑥ CONCRETE WALK, PATHWAY OR FLATWORK PER PLAN
 - ⑦ WHEN POSSIBLE GROUP VALVES TOGETHER PER DIAGRAM

- NOTES:**
1. VALVE BOXES SHALL BE AT A UNIFORM DISTANCE AND PARALLEL TO THE HARDSCAPE, PLACED ADJACENT TO WALK OR FLATWORK.

Limitations of Review and Approval of Landscape Improvement Plans

A review of this landscape plan is solely for the purpose of analyzing the proposed landscape elements such as but not limited to planting and irrigation in relation to the City of Perris' regulations, ordinances, and codes. Unapproved comments of other items shown on this plan set shall not be taken or assumed as approved. The review of project drawings and specifications by the City of Perris and their consultants is confined to a review only and does not relieve the Landscape Architect of Work, of their responsibilities for the project. Through the use of the approved plans for construction the Landscape Architect of Work indemnifies the City of Perris, its officers, agents and employees to be held harmless from any and all liability, claims, negligence, acts, errors or omissions of the Landscape Architect of Work, their employees, agents or consultants.

Christopher Baldino 05/12/2026
City of Perris, Landscape Plan Checker
Plan Review Date

VALVE BOX PLACEMENT

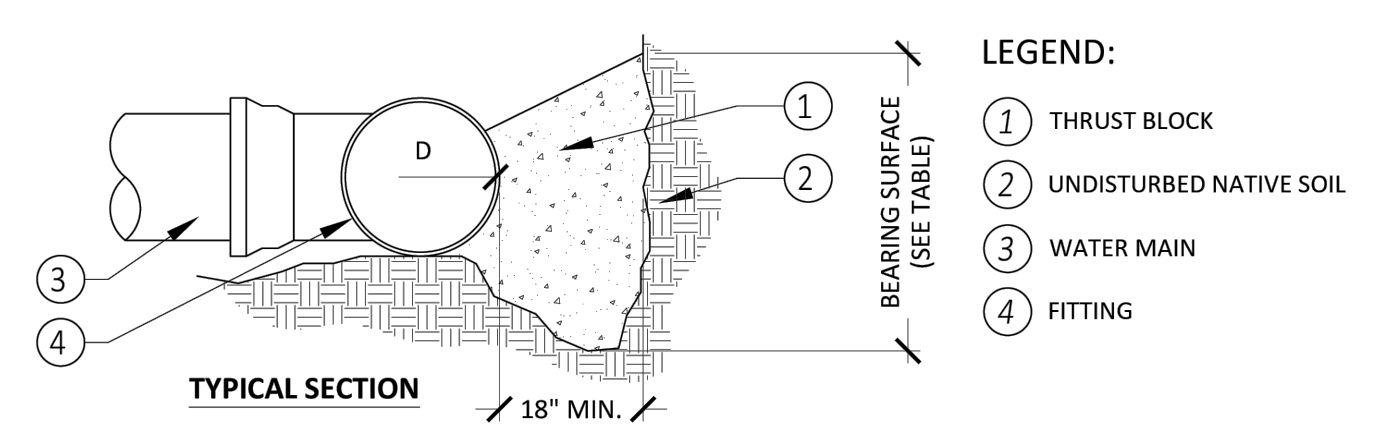
(I-31)

DATE: 08/12/24

IRRIGATION DETAIL



CITY OF PERRIS
DEVELOPMENT SERVICES DEPARTMENT
PLANNING DIVISION
135 NORTH D STREET, PERRIS, CA 92570-2200
(951) 943-5003



- LEGEND:**
- ① THRUST BLOCK
 - ② UNDISTURBED NATIVE SOIL
 - ③ WATER MAIN
 - ④ FITTING

DIAMETER OF PIPE D (INCHES)	MINIMUM BEARING SURFACE (sq ft)			
	BENDS	TEES	TEES AND DEAD ENDS	TEES AND DEAD ENDS
4	1	4	4	4
6	1	4	4	4
8	2	4	4	4
10	3	4	4	4
12	4	4	4	4
14	5	4	4	4
16	7	4	4	4
18	9	4	4	4
20	11	4	4	4
24	15	4	4	4
30	24	4	4	4
36	34	4	4	4

MINIMUM SURFACE AREA BASED ON WATER PRESSURE OF 150 PSI AND ALLOWABLE SOIL PRESSURE OF 1,000 PSI

- NOTES:**
1. EXTEND THRUST BLOCKS TO UNDISTURBED SOIL. EXCAVATION INTO TRENCH WALL MAY BE NECESSARY.
 2. FROM VERTICAL SURFACES OF POURED CONCRETE THRUST BLOCKS EXCEPT ON BEARING SURFACE.
 3. ENCASE ALL FITTINGS IN POLYETHYLENE WRAP. DO NOT ALLOW CONCRETE TO DIRECTLY CONTACT JOINTS, FITTING AND/OR BOLTS.
 4. ADD #4 MIN. REBAR ANCHORS AS NEEDED. FIELD BEND TO WRAP AROUND EQUIPMENT.

THRUST BLOCKS

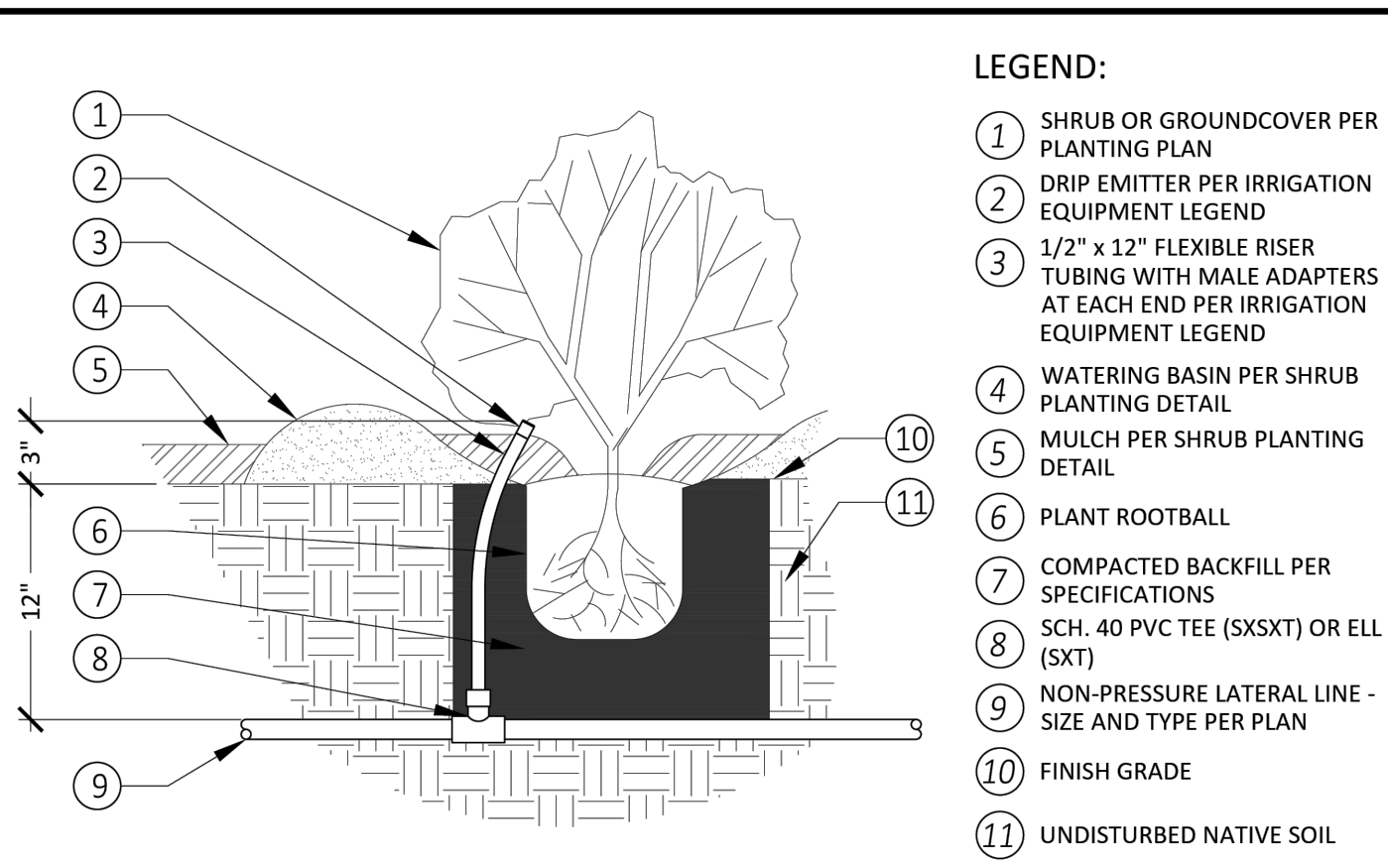
(I-28)

DATE: 08/12/24

IRRIGATION DETAIL



CITY OF PERRIS
DEVELOPMENT SERVICES DEPARTMENT
PLANNING DIVISION
135 NORTH D STREET, PERRIS, CA 92570-2200
(951) 943-5003



- LEGEND:**
- ① SHRUB OR GROUND COVER PER PLANTING PLAN
 - ② DRIP EMITTER PER IRRIGATION EQUIPMENT LEGEND
 - ③ 1/2" x 1/2" FLEXIBLE RISER TUBING WITH MALE ADAPTERS AT EACH END PER IRRIGATION EQUIPMENT LEGEND
 - ④ WATERING BASIN PER SHRUB PLANTING DETAIL
 - ⑤ MULCH PER SHRUB PLANTING DETAIL
 - ⑥ PLANT ROOTBALL
 - ⑦ COMPACTED BACKFILL PER SPECIFICATIONS
 - ⑧ SCH. 40 PVC TEE (SXSXT) OR ELL (SXT)
 - ⑨ NON-PRESSURE LATERAL LINE - SIZE AND TYPE PER PLAN
 - ⑩ FINISH GRADE
 - ⑪ UNDISTURBED NATIVE SOIL

- NOTES:**
1. ALL THREADED FITTINGS MUST HAVE TEFLON TAPE.
 2. INSTALL DRIP EMITTER INSIDE PLANT WATERING BASIN DIRECTLY ADJACENT TO ROOTBALL.

N.T.S.

EMITTER ON FLEXIBLE RISER

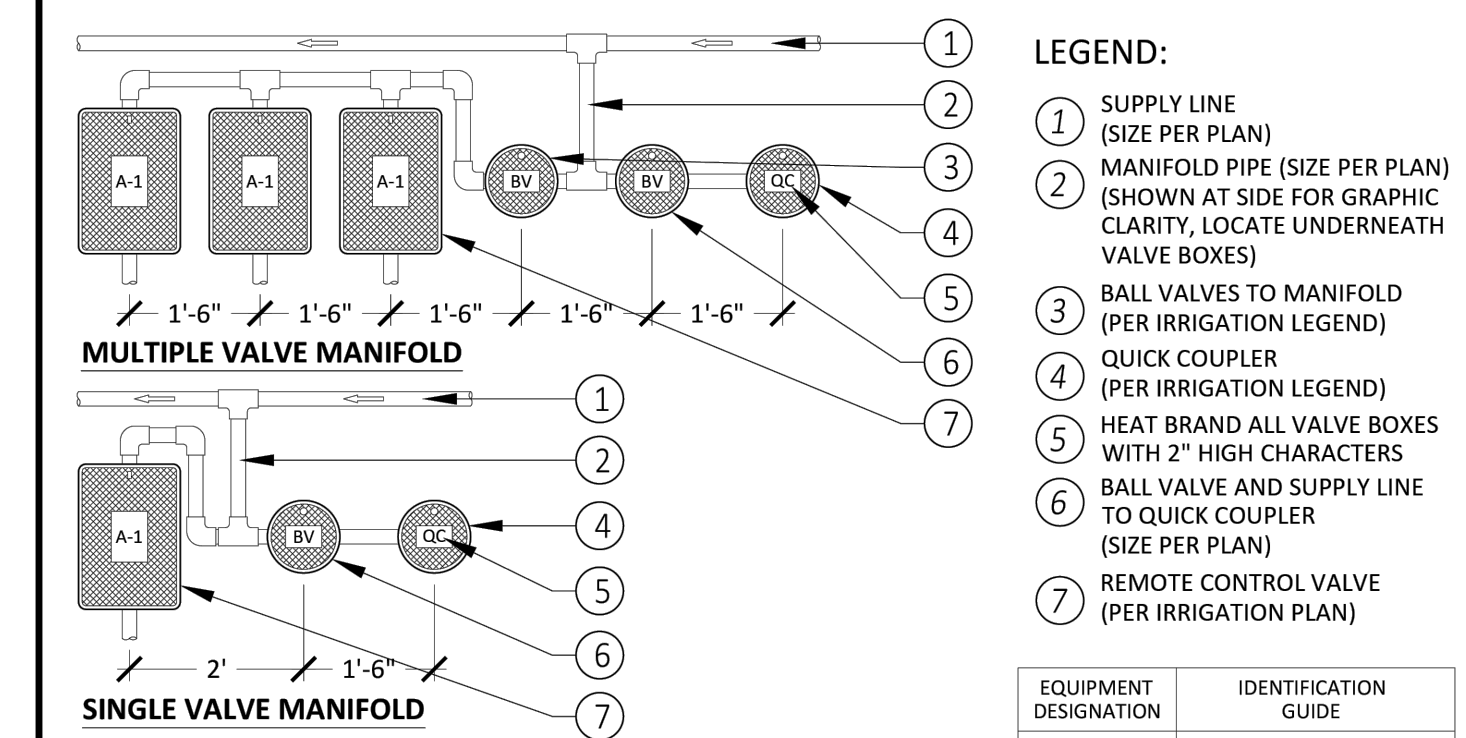
(I-38)

DATE: 08/12/24

IRRIGATION DETAIL



CITY OF PERRIS
DEVELOPMENT SERVICES DEPARTMENT
PLANNING DIVISION
135 NORTH D STREET, PERRIS, CA 92570-2200
(951) 943-5003



- LEGEND:**
- ① SUPPLY LINE (SIZE PER PLAN)
 - ② MANIFOLD PIPE (SIZE PER PLAN) (SHOWN AT SIDE FOR GRAPHIC CLARITY, LOCATE UNDERNEATH VALVE BOXES)
 - ③ BALL VALVES TO MANIFOLD (PER IRRIGATION LEGEND)
 - ④ QUICK COUPLER (PER IRRIGATION LEGEND)
 - ⑤ HEAT BRAND ALL VALVE BOXES WITH 2" HIGH CHARACTERS
 - ⑥ BALL VALVE AND SUPPLY LINE TO QUICK COUPLER (SIZE PER PLAN)
 - ⑦ REMOTE CONTROL VALVE (PER IRRIGATION PLAN)

EQUIPMENT DESIGNATION	IDENTIFICATION GUIDE
ARV	AIR RELIEF VALVE
BS	BASKET STRAINER
BV	BALL VALVE
CCC	COMMUNICATION SPLICES
FS	FLOW SENSOR
FVA	FLUSH VALVE ASSEMBLY
GR	GROUNDING RODS
GV	GATE VALVE
MS	MOISTURE SENSOR
MV	MASTER VALVE
PB	PULL BOX
(STA NO.)	REMOTE CONTROL VALVES
QC	QUICK COUPLERS

CONTACT LANDSCAPE ARCHITECT FOR INFO ON ANY DEVICE IN A BOX NOT LISTED.

- NOTES:**
1. CONTROL VALVES SHALL BE INSTALLED TO ALLOW ORDERLY ARRANGEMENT OF VALVE BOXES.
 2. WHERE POSSIBLE, LOCATE VALVE MANIFOLDS IN SHRUB OR GROUND COVER AREAS ONLY 12" FROM HARDSCAPE.
 3. LOCATION OF VALVE MANIFOLDS SHALL BE STAKED FOR APPROVAL BY LANDSCAPE ARCHITECT PRIOR TO INSTALLATION.
 4. CENTER VALVE BOXES OVER VALVE MANIFOLDS TO FACILITATE ACCESS AND MAINTENANCE.
 5. SET VALVE BOXES AT EQUAL ELEVATIONS W/ TOPS 2" ABOVE FINISH GRADE IN SHRUB/GROUND COVER AREAS.
 6. VALVE BOXES SHALL BE SET PARALLEL TO EACH AND PERPENDICULAR TO EDGE OF AREA.
 7. DO NOT DEFORM OR COLLAPSE VALVE BOX BY EXCESSIVE SOIL COMPACTION AROUND BOX.
 8. SEE ALSO INDIVIDUAL VALVE INSTALLATION DETAILS.

BOX IDENTIFICATION

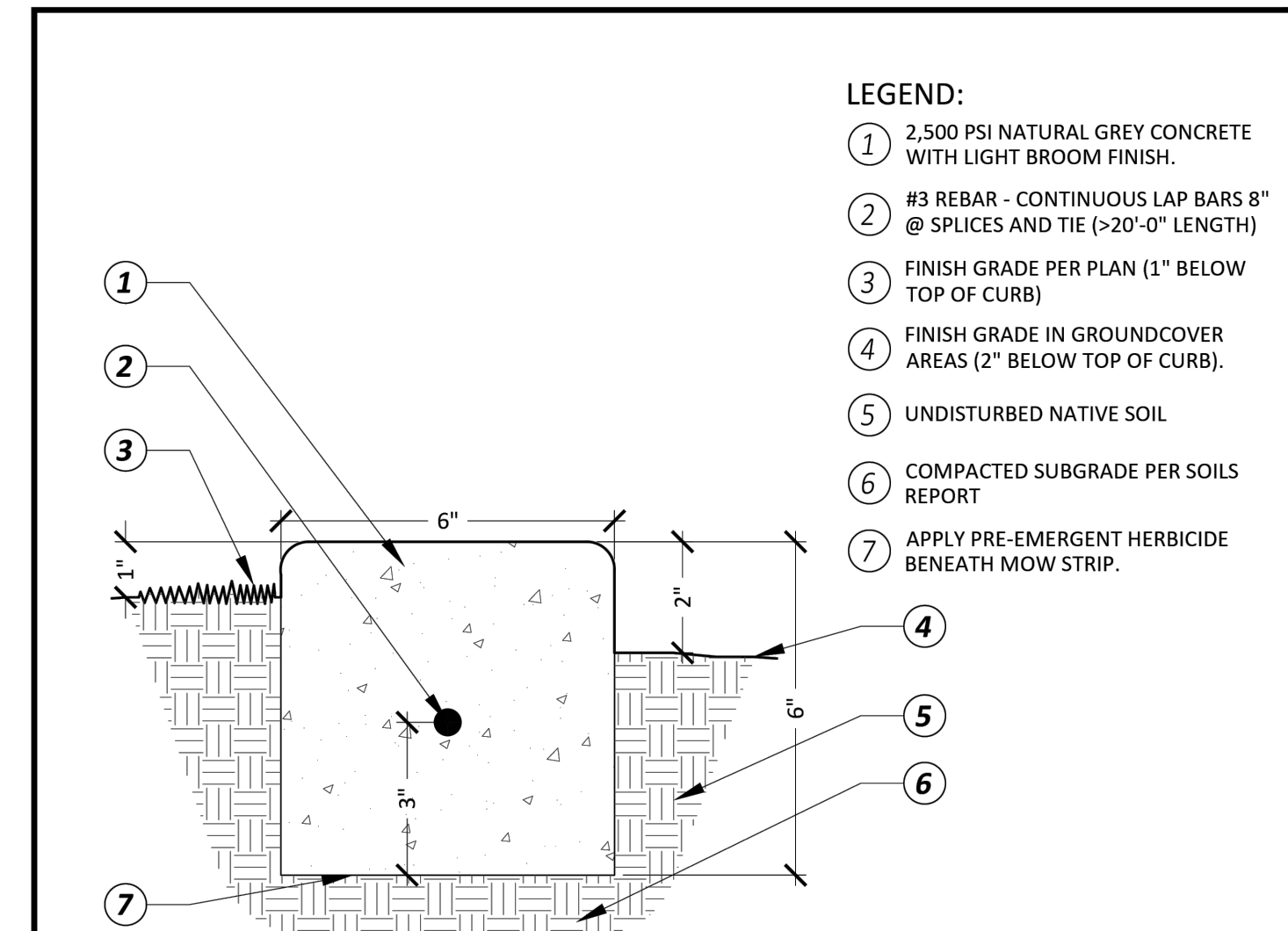
(I-29)

DATE: 08/12/24

IRRIGATION DETAIL



CITY OF PERRIS
DEVELOPMENT SERVICES DEPARTMENT
PLANNING DIVISION
135 NORTH D STREET, PERRIS, CA 92570-2200
(951) 943-5003



- LEGEND:**
- ① 2,500 PSI NATURAL GREY CONCRETE WITH LIGHT BROOM FINISH.
 - ② #3 REBAR - CONTINUOUS LAP BARS 8" @ SPLICES AND TIE (>20'-0" LENGTH)
 - ③ FINISH GRADE PER PLAN (1" BELOW TOP OF CURB)
 - ④ FINISH GRADE IN GROUND COVER AREAS (2" BELOW TOP OF CURB)
 - ⑤ UNDISTURBED NATIVE SOIL
 - ⑥ COMPACTED SUBGRADE PER SOILS REPORT
 - ⑦ APPLY PRE-EMERGENT HERBICIDE BENEATH MOW STRIP.

- NOTES:**
1. INSTALL 1/2" PREFORMED EXPANSION JOINTS @ 20' O.C. AND AT BEGINNING/END OF RADIUS
 2. PROVIDE 1" DP x 1/8" THICK TOOLED CONTROL JOINT @ 10' O.C.

SCALE: 1"=3"

CONCRETE MOWCURB

(L-4)

DATE: 08/12/24

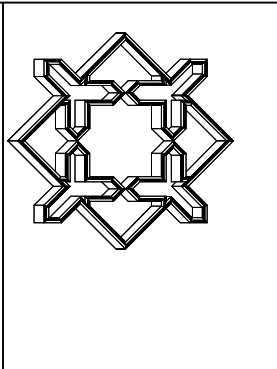
LANDSCAPING DETAIL



DIG ALERT

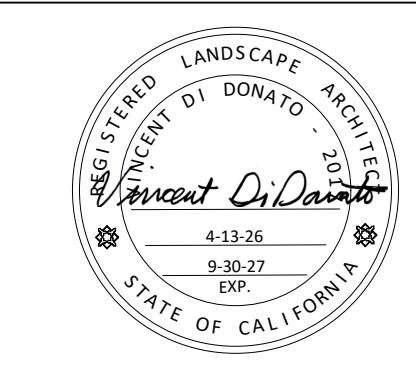
Call: TOLL FREE
1-800-227-2600
OR
811

TWO FULL WORKING DAYS BEFORE YOU DIG



ALHAMBRA GROUP
LANDSCAPE ARCHITECTURE
California license #2017

RECREATION FACILITIES PLANNING
41635 Enterprise Circle North, Suite C
TEMECULA, CA 92590 (951) 296-6802
CELL PHONE (951) 970-6156
EMAIL vince@alhambragroup.net



DATE: 4-13-26
DRAWN BY: VD
CHECKED BY: VD

DATE	BY	MARK	DESCRIPTION

ACCEPTED BY:		DATE	

CITY OF PERRIS

SOUTH PERRIS FIRE STATION
WATER USE IMPROVEMENTS
RWIP

IRRIGATION DETAILS

	RWIP:
DOPP.	RWUE: 16832
COORD. 30-D	RWUP:
I.D. 98	SHT. 8 OF 11
S.A. 35	D-

PLANTING NOTES

- ALL PLANTING SHALL CONFORM TO THE CITY OF PERRIS DEVELOPMENT CODES AND STANDARDS.
- SOIL TESTING:**
CONTRACTOR SHALL PROVIDE A HORTICULTURAL SOILS ANALYSIS PERFORMED BY A LABORATORY OF THE CALIFORNIA ASSOC. OF AGRICULTURAL LABORATORIES. SOIL ANALYSIS SUBMITTED TO THE CITY SHALL INCLUDE THE FOLLOWING: SOIL TEXTURE, PERCENTAGE OF ORGANIC MATTER, SOIL INFILTRATION RATE (DERIVED FROM SOIL TEXTURE/INFILTRATION RATE TABLES), PH AND TOTAL SOLUBLE SALTS. CONTRACTOR SHALL ADJUST SOIL AMENDMENT RECOMMENDATIONS USING APPROPRIATE PRODUCTS TO CONFORM TO SOIL ANALYSIS RESULTS AS REQUIRED. TURN OVER RESULTS TO CITY LANDSCAPE ARCHITECT AT PRE-CONSTRUCTION MEETING.
- CONTRACTOR SHALL ENSURE POSITIVE DRAINAGE OF ALL PLANTING AREAS ON SITE AND SUBSURFACE DRAINAGE FOR ENCLOSED PLANTING AREAS.
- THE CONTRACTOR SHALL CAREFULLY INSPECT THE SITE AND VERIFY ALL THE CONDITIONS AND DIMENSIONS PRIOR TO PROCEEDING WITH ANY WORK. NOTIFY LANDSCAPE ARCHITECT AND OWNER IF ANY INCONSISTENCIES OCCUR.
- THE CONTRACTOR SHALL REMOVE ALL WEEDS, ROCKS, DEBRIS AND OTHER EXTRANEIOUS MATERIALS FROM THE JOB SITE PRIOR TO PROCEEDING WITH ANY WORK.
- ALL PLANT MATERIALS SHALL BE HANDLED OR STORED SO THAT THEY ARE ADEQUATELY PROTECTED FROM DRYING OUT, FROM SUN OR WIND BURN, OR FROM ANY OTHER INJURY.
- THE CONTRACTOR SHALL APPLY TO ALL SHRUB PLANTING AREAS A 3" LAYER OF "FOREST FLOOR" WOOD MULCH, CONTACT PLANT'S CHOICE (619) 585-9909. CONTRACTOR SHALL PROVIDE LANDSCAPE ARCHITECT WITH SAMPLE FOR APPROVAL PRIOR TO INSTALLATION.
- CONTRACTOR TO VERIFY ALL PLANT QUANTITIES SHOWN ON PLANS.
- SEE SHEET L-11 FOR DETAILS & SPECIFICATIONS.
- ALL ABOVE GROUND UTILITIES SHALL BE SCREENED W/ PLANTING. CONTACT CITY LANDSCAPE ARCHITECT REGARDING LOCATIONS.
- ALL PLANTING SHALL NOT INTERFERE W/ TRAFFIC SITE LINES.
- CONTRACTOR SHALL TURN OVER SOIL AMENDMENT VERIFICATION TICKETS TO THE CITY INSPECTOR.
- INSTALL CENTURY/ VILLA ROOT BARRIERS .06" SIZE ADJACENT TO HARDSCAPE & (8) FEET FROM TRUNK EACH SIDE (16" MIN. TOTAL) WHEN TREES ARE PLANTED 6" FROM THE HARDSCAPE TYP.
- CONTACT THE CITY FOR ALL INSPECTIONS REQUIRED.
- LANDSCAPE IMPROVEMENTS IN OFFSITE AREAS/PUBLIC RIGHTS-OF-WAY SHALL BE SEPARATED FROM PRIVATELY-MAINTAINED ON SITE LANDSCAPE AREAS WITH A CITY-STANDARD, CONTINUOUS CONCRETE MOW CURB (6"X8") ALONG THE PROPERTY LINE (ON-SITE)- EXISTING INSTALLED AS PART OF OFF-SITE.

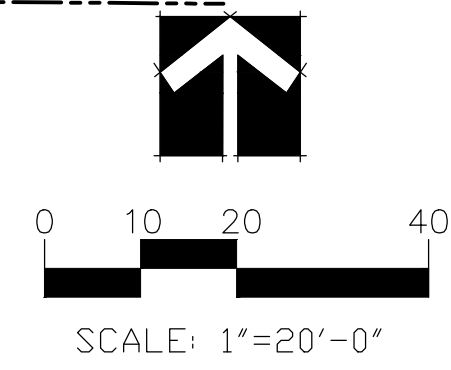
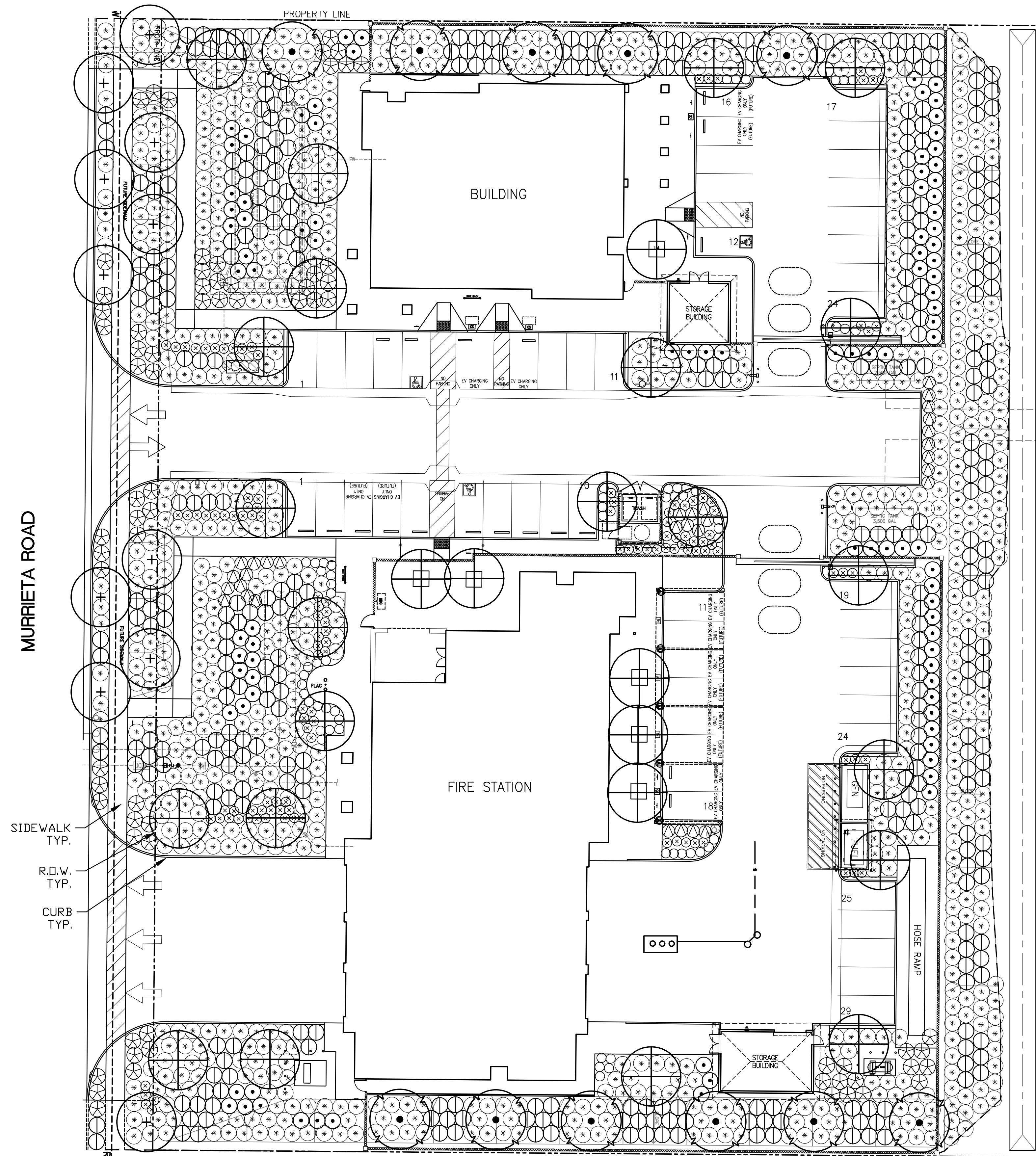
Limitations of Review and Approval of Landscape Improvement Plans

A review of this landscape plan is solely for the purpose of analyzing the proposed landscape elements such as but not limited to planting and irrigation in relation to the City of Perris' regulations, ordinances, and codes. Unproduced comments of other items shown on this plan set shall not be taken or assumed as approved. The review of project drawings and specifications by the City of Perris and their consultants is confined to a review only and does not relieve the Landscape Architect of Work, of their responsibilities for the project. Through the use of the approved plans for construction the Landscape Architect of Work indemnifies the City of Perris, its officer's, agents and employees to be held harmless from any and all liability, claims, negligent acts, errors or omissions of the Landscape Architect of Work, their employees, agents, or consultants.

Christopher Baldino 05/12/2026
City of Perris, Landscape Plan Checker Plan Review Date

PLANTING LEGEND

SYMBOL	BOTANICAL NAME	COMMON NAME	SIZE	NUMBER	REMARKS (STANDARD TRUNK FOR ALL TREES)	WATER USE
TREES:						
+	LAURUS NOBILIS	BAY LAUREL	24" BOX	28	DOUBLE STAKE/ HEIGHT 8-10', SPREAD 3'-4" MIN.	L
•	CERCIS CANADENSIS 'FOREST PANSY'	EASTERN RED BUD	24" BOX	11	DOUBLE STAKE /HEIGHT 8-10', SPREAD 3'-4" MIN.	L
•	CHITALPA TASHKENTENSIS 'PINK DAWN'	PINK CHITALPA	24" BOX	11	DOUBLE STAKE /HEIGHT 8-10', SPREAD 3'-4" MIN.	L
SHRUBS:						
⊕	WESTRINGIA FRUTICOSA 'MUNDI'	PROSTRATE COAST ROSEMARY	1 GAL	772	TRIANGULAR SPACING @ 5' O.C.	L
⊕	HESPERALOE PARVIFLORA	RED YUCCA	5 GAL	31	FULL & BUSHY @ 4' O.C.	L
⊕	LEUCOPHYLLUM FRUTICOSA 'COMPACTA'	COMPACT TEXAS RANGER	5 GAL	94	FULL & BUSHY @ 5' O.C.	L
⊕	DIANELLA 'LITTLE REV'	LITTLE REV FLAX	1 GAL	59	FULL & BUSHY @ 3' O.C.	L
⊕	CALLISTEMON VIMINALIS 'LITTLE JOHN'	DWARF BOTTLE BRUSH	5 GAL	123	FULL & BUSHY @ 3' O.C.	L
⊕	JUNIPERUS HORIZONTALIS	BLUE RUG JUNIPER	1 GAL	72	TRIANGULAR SPACING @ 5' O.C.	L
⊕	CISTUS PULVERULENTUS 'SUNSET'	MAGENTA ROCK ROSE	1 GAL	364	TRIANGULAR SPACING @ 5' O.C.	L
BASINS:						
⊕	JUNCUS PATENS	CALIFORNIA GRAY RUSH	1 GAL.	7	3' O.C. IN MODULAR WETLAND PLANTABLE AREAS TYP.	L
MULCH & GROUNDCOVER:						
NOT SHOWN	FOREST BLEND WOOD MULCH	MEDIUM GRIND WOOD MULCH	3" MAX.	AS REQ'D.	3" DEEP - INSTALL TO ALL PLANTING AREAS	



DIG ALERT
DIAL TOLL FREE 811
AT LEAST TWO DAYS BEFORE YOU DIG
UNDERGROUND SERVICE ALERT OF SOUTHERN CALIFORNIA

DATE	BY	MARK	REVISIONS	APPR. DATE
	ENGINEER			CITY
	DESIGNED BY:		DRAWN BY:	CHECKED BY:

ALHAMBRA GROUP
LANDSCAPE ARCHITECTURE
CALIFORNIA LICENSE #2017
RECREATION FACILITIES PLANNING
41635 ENTERPRISE CIRCLE NORTH, SUITE C
TEMECULA, CA 92590 (951) 296-6802
AG25-107

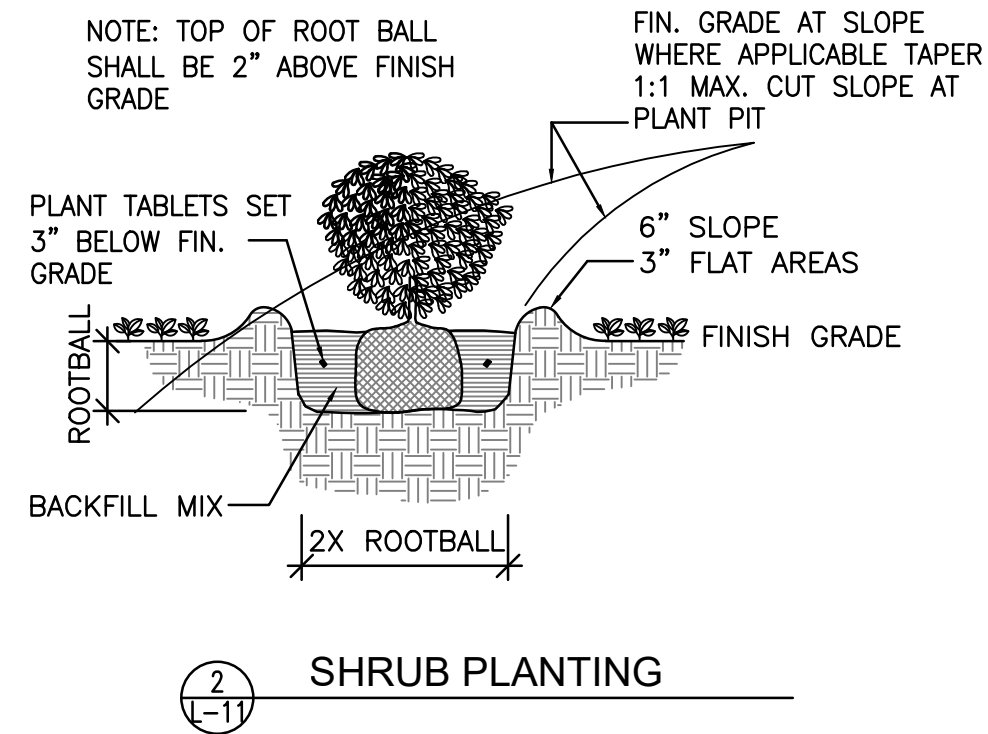
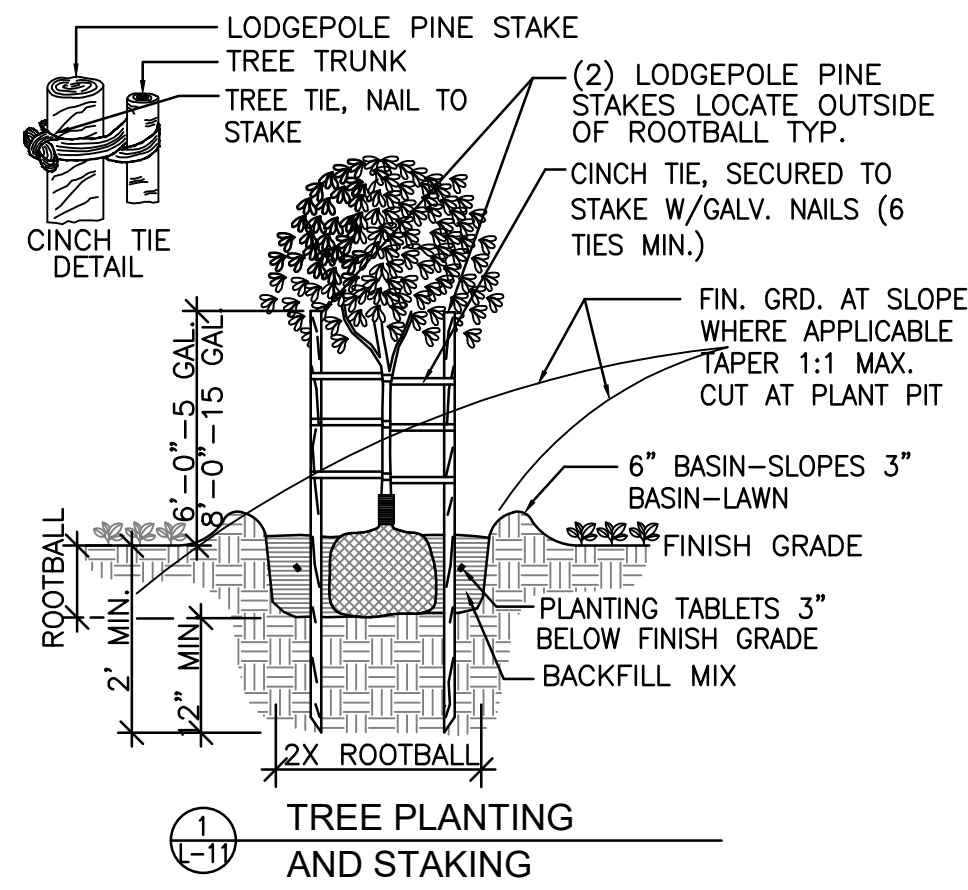
SEAL
REGISTERED LANDSCAPE ARCHITECT
INGENIERO DI DONATO - 2017
Perris Di Donato
4-13-26
9-30-27
EXP.
STATE OF CALIFORNIA

APPROVED BY: _____ DATE: _____
CITY ENGINEER
APPROVED BY: _____ DATE: _____

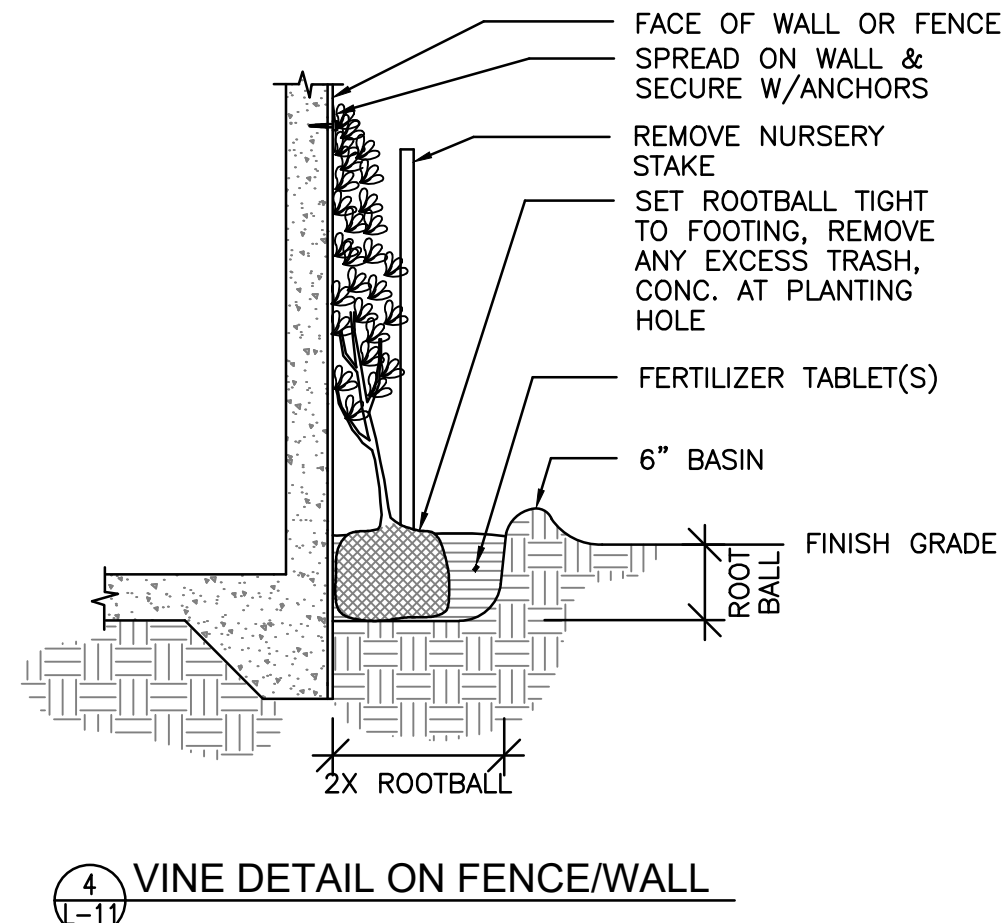
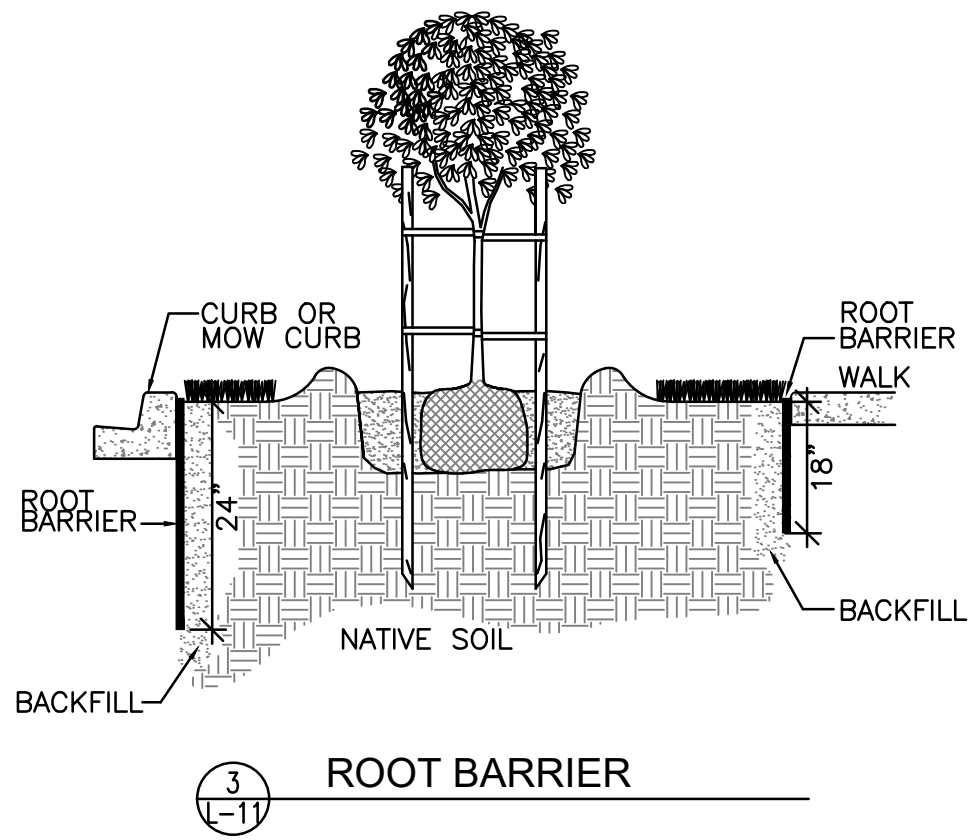
CITY OF PERRIS
ENGINEERING DEPARTMENT
24 S. D ST. SUITE 100
PERRIS CA 92570
951-956-2120
SCALE: AS SHOWN
BENCHMARK:
DATE: _____

CITY OF PERRIS, CALIFORNIA
SOUTH PERRIS FIRE STATION
PLANTING PLAN
FOR: CITY OF PERRIS W.O.

SHEET NO. **10**
OF 11 SHEETS
FILE NO.



1. TOP OF ROOT CONTROL BARRIER MUST BE AT GRADE.
2. INSTALL BARRIER AS CLOSE TO STRUCTURE AS POSSIBLE.
3. BARRIER CAN BE PLACED AGAINST INSIDE OF FORMS.
4. THE ROOT DEFLECTORS MUST BE FACING TOWARD THE TREE.
5. EXTEND BARRIER A MIN. OF 8" BELOW BOTTOM OF HARDSCAPE.
6. INSTALL ROOT BARRIER 8' FROM TRUNK IN EACH DIRECTION.
7. ALL TREES 6' AND CLOSER TO HARDSCAPE REQUIRE ROOT CONTROL BARRIER.



SOIL PREPARATION AND PLANTING

1. ALL PLANTING LOCATIONS SHOWN AND MEASUREMENTS SCALED FROM THE DRAWINGS ARE APPROXIMATE. FINAL LOCATIONS TO BE APPROVED BY THE LANDSCAPE ARCHITECT.
 2. ALL PLANT MATERIALS SHALL BE PROTECTED FROM EXCESSIVE WIND, SUN, AND ALL OTHER DAMAGE.
 3. MATERIALS:
 - TOPSOIL: APPROVED CLEAN SANDY LOAM AND/OR LOAM SOIL, OR APPROVED EQUAL.
 - SOIL CONDITIONER
 - NITROLIZED SHAVINGS, TERRA BLEND OR APPROVED EQUAL.
 - GYPSUM: BEN FRANKLIN AGRICULTURAL GYPSUM, OR EQUAL.
 - PRE-PLANT FERTILIZER: COMMERCIAL (6-20-20) OR EQUAL.
 - POST-PLANT FERTILIZER: COMMERCIAL (16-8-8) OR EQUAL.
 - PLANTING TABLETS: AGRIFORM (20-10-5) BLUE CHIP TABLETS.
 - PLANTING BACKFILL: TWO (2) PARTS EXCAVATED SOIL BLENDED WITH ONE (1) PART SOIL CONDITIONER.
 - MULCH: SHREDDED, CLEAN GROUND FIR OR PINE WOOD MULCH.
 - TREE STAKES: TWO INCH (2") BY TEN FOOT (10') LONG SOUND LODGE POLE PINE STAKES, POINTED ONE END ONLY.
 - TREE TIES: BLACK VINYL CINCH-TIES BY BORDEN OR EQUAL.
- (N.I.C.) TREE GUYS: 12 GAUGE GALVANIZED STRANDED WIRE PER DETAIL.
- (N.I.C.) WOOD HEADERS: CONSTRUCTION ALL-HEART REDWOOD, FREE OF KNOTS ON TOP EDGE.
- PLANT MATERIALS: PER THE CALIFORNIA STATE DEPARTMENT OF AGRICULTURE'S REGULATIONS FOR NURSERY INSPECTIONS OF RULES AND GRADING. PLANTS SHALL BE SOUND AND HEALTHY, FREE OF DISEASE AND DEFECTS, WELL DEVELOPED OF SIZE NORMAL FOR CONTAINER SIZE AND NOT ROOT-BOUND. UNSATISFACTORY AND UNDER-SIZED PLANTS WILL BE REJECTED. PROTECT PLANTS AT ALL TIMES ACCORDING TO SPECIES.
- SEEDS: PURE, LIVE SEED OF VARIETIES SPECIFIED, FREE OF WEED SEED; GERMINATION AS SPECIFIED.

4. SOIL PREPARATION AND GRADING
 - ROUGH GRADES AND ROCK PLACEMENT: ESTABLISHED BY OTHER SECTIONS.
 - SOIL CONDITIONING: THOROUGHLY INCORPORATE THE FOLLOWING INTO THE PLANT BACKFILL MIX TYPICAL.
 - SOIL CONDITIONER - PER SOIL TEST
 - PRE-PLANT FERTILIZER - PER SOIL TEST
 - GYPSUM-PER SOIL TEST
 - WETTING AGENT - PER SOIL TEST
 - DEEP WATERING: DEEP WATERING LEACH ALL PLANTING AREAS TO EIGHT (8) INCHES MINIMUM DEPTH.
 - FINAL GRADING: ENSURE POSITIVE DRAINAGE OF PROJECT AREA WITH ALL AREAS LEFT SMOOTH AND EVEN AND FREE OF ROCKS, CLOUDS AND DEBRIS. FINISH GRADE SHALL BE ONE INCH (1") BELOW ADJACENT FLATWORK AND CURBS EXCEPT LAWNS SHALL BE FLUSH.
5. PLANTING INSTALLATION
 - LAYOUT: PER PLANS WITH FINAL REVIEW AND APPROVAL OF LOCATIONS BY LANDSCAPE ARCHITECT.
 - EXCAVATION: PLANTING HOLES SHALL BE AS SHOWN ON DETAILS.
 - PLANTING TABLETS: SET THREE INCHES (3") BELOW GRADE:
 - 1-5 GRAM PER FLAT PLANT AND/OR CUTTING
 - 1-21 GRAM PER 1 GALLON
 - 3-21 GRAM PER 5 GALLON
 - 5-21 GRAM PER 15 GALLON
 - 1-21 GRAM PER EACH 2 INCH BOX SIZE
 - SETTING: SET PLANTS SLIGHTLY HIGHER THAN FINISH GRADE AND THOROUGHLY WATER IN.
 - STAKING AND GUYING: TO INSURE SAFETY AND PROPER HEALTH OF TREE. TIE WITH TIES PER DETAILS.
 - WATER BASINS: AS REQUIRED TO ADEQUATELY WATER TREES AND SHRUBS.
 - LEVELING: ALL PLANTING AREAS SHALL BE LEFT SMOOTH AND EVEN.
 - MULCHING: NOTED AREAS SHALL RECEIVE EVEN THREE INCH (3") LAYER OF WOOD MULCH IN ALL PLANTING AREAS EXCEPT FUEL MODIFICATION AREAS WITH NO MULCH TYP.

7. MAINTENANCE
 - PLANT MAINTENANCE WORK SHALL CONSIST OF APPLYING WATER (EXCEPT INITIAL WATERING OF PLANTS) WEEDING, CARING FOR PLANTS, AND PERFORMING THE FOLLOWING FINAL PLANT ESTABLISHMENT WORK:
 - THE ENTIRE PROJECT TO BE MAINTAINED FOR A PERIOD OF (90) CALENDAR DAYS, COMMENCING FROM THE TIME ALL ITEMS OF WORK HAVE BEEN COMPLETED TO THE SATISFACTION OF THE LANDSCAPE ARCHITECT.
 - THE ENTIRE PROJECT SHALL BE CARED FOR SO THAT A NEAT AND DURING THE FINAL (90) CALENDAR DAY PERIOD ALL PLANTS AND PLANTED AREAS SHALL BE KEPT WELL WATERED AND WEED FREE AT ALL TIMES. WEEDS, DALLAS, JOHNSON, AND BERMUDA GRASS SHALL BE REMOVED.
 - CLEAN CONDITION WILL BE PRESENTED AT ALL TIMES, TO THE SATISFACTION OF THE LANDSCAPE ARCHITECT.
 - CONTRACTOR SHALL MAINTAIN A SUFFICIENT NUMBER OF MEN AND WORKMEN SHALL NOT BE ALLOWED TO WALK ON SHRUB AREAS UNNECESSARILY BEFORE, DURING OR AFTER PLANTING. DAMAGED OR COMPACTED SHRUB AREAS SHALL BE RE-PLANTED AT THE CONTRACTOR'S EXPENSE.
 - IN ORDER TO EXPEDITE THE PLANT ESTABLISHMENT WORK, ADEQUATE EQUIPMENT TO PERFORM THE WORK HEREIN SPECIFIED AND FROM THE TIME ANY PLANTING IS DONE UNTIL THE END OF THE FINAL (90) CALENDAR DAY PERIOD.
 - THE CONTRACTOR MAY BE RELIEVED FROM MAINTENANCE WORK WHEN THE FINAL (90) CALENDAR DAY MAINTENANCE WORK HAS BEEN SATISFACTORILY COMPLETED TO THE SATISFACTION OF THE LANDSCAPE ARCHITECT.
 - DAMAGE TO PLANTING AREAS SHALL BE REPLACED IMMEDIATELY.
 - (1) DEPRESSIONS CAUSED BY VEHICLES, BICYCLES, OR FOOT TRAFFIC TO BE FILLED WITH TOPSOILS AND LEVELED. REPLANT DAMAGED AREAS.
 - (2) EXTERMINATE GOPHERS AND MOLES AND REPAIR DAMAGE, AS ABOVE.

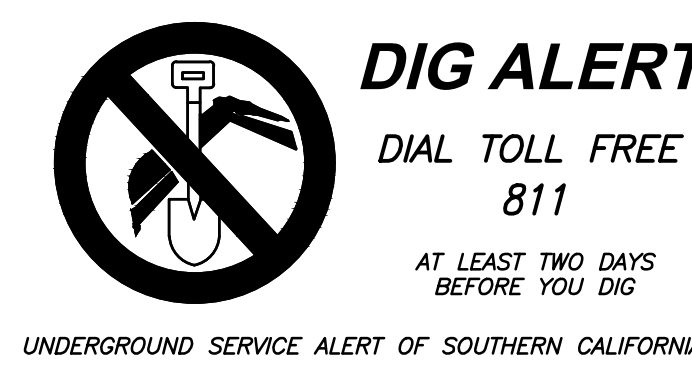
8. GUARANTEE AND REPLACEMENTS
 - ALL SHRUBS AND GROUNDCOVER SHALL BE GUARANTEED BY THE CONTRACTOR AS TO GROWTH AND HEALTH FOR A PERIOD OF SIX MONTHS AFTER COMPLETION OF THE SPECIFIED MAINTENANCE PERIOD AND/OR FINAL ACCEPTANCE BY THE LANDSCAPE ARCHITECT. ALL TREES UP TO 5 GALLON SIZE SHALL BE GUARANTEED BY THE CONTRACTOR TO LIVE AND GROW IN AN ACCEPTABLE UPRIGHT POSITION FOR A PERIOD OF SIX MONTHS AFTER COMPLETION OF THE SPECIFIED MAINTENANCE PERIOD AND/OR FINAL ACCEPTANCE BY THE LANDSCAPE ARCHITECT. TREES IN 15 GALLON, OR LARGER, AND ALL FIELD GROWN SPECIMENS SHALL BE GUARANTEED BY THE CONTRACTOR TO LIVE AND GROW IN AN ACCEPTABLE UPRIGHT POSITION FOR A PERIOD OF ONE YEAR AFTER COMPLETION OF THE SPECIFIED MAINTENANCE PERIOD, AND/OR FINAL ACCEPTANCE BY THE LANDSCAPE ARCHITECT.
9. CLEAN-UP
 - UPON COMPLETION OF WORK OF THIS SECTION, REMOVE RUBBISH, TRASH AND DEBRIS RESULTING FROM OPERATION. REMOVE DISUSED EQUIPMENT AND IMPLEMENTS OF SERVICE, AND LEAVE ENTIRE AREA INVOLVED IN A NEAT AND ACCEPTABLE CONDITION SUCH AS TO MEET THE APPROVAL OF THE LANDSCAPE ARCHITECT, WITH ALL PAVING, WALKS AND OTHER CONSTRUCTION WASHED-DOWN AND FREE OF ALL DIRT AND DEBRIS.

- SPECIAL CONDITIONS
- ALL PROVISIONS OF THE GENERAL CONDITIONS OF THE CONTRACT SHALL APPLY TO THE WORK AS IF HEREIN WRITTEN.
1. ALL EXISTING UTILITY LINES AND IMPROVEMENTS SHALL BE LOCATED PRIOR TO WORK.
 2. CONTRACTOR SHALL SECURE AND PAY FOR ALL REQUIRED PERMITS AND FEES TO COMPLETE WORK.
 3. CONTRACTOR SHALL BE INSURED FOR LIABILITY AND PROPERTY DAMAGE.
 4. CONTRACTOR SHALL ADEQUATELY PROTECT ALL EXISTING PROPERTY.
 5. CONTRACTOR SHALL GUARANTEE ALL MATERIALS AND WORKMANSHIP FOR ONE YEAR. (EXCEPT AS NOTED)
 6. ALL MATERIALS SHALL BE OF STANDARD, APPROVED, AND FIRST GRADE QUALITY AND SHALL BE IN PRIME CONDITION.
 7. WORK SHALL BE PERFORMED WHEN WEATHER CONDITIONS PERMIT SATISFACTORY RESULTS.
 8. ALL WORK SHALL BE DONE IN ACCORDANCE WITH APPROVED METHODS AND STANDARDS AS SET FORTH BY THE CALIFORNIA COUNCIL OF LANDSCAPE CONTRACTORS, UNLESS OTHERWISE INDICATED OR SHOWN.
 9. ALL WORK SHALL BE IN FULL COMPLIANCE WITH ALL GOVERNING CODES AND REGULATIONS.
 10. ALL AREAS SHALL BE LEFT CLEAN, FREE OF DEBRIS AND WASHED DOWN.
 11. LANDSCAPE ARCHITECT RETAINS OPTION TO REQUIRE THAT CONTRACTOR RECEIVE A FIELD OBSERVATION OF EACH OPERATION AND MATERIAL PRIOR TO INCORPORATION INTO THE WORK.
 12. CONTRACTOR SHALL USE ANY MEANS NECESSARY TO PROTECT ALL PLANTED AREAS FROM FOOT TRAFFIC INCLUDING BUT NOT LIMITED TO STAKES & WARNING TAPE.

Limitations of Review and Approval of Landscape Improvement Plans

A review of this landscape plan is solely for the purpose of analyzing the proposed landscape elements such as but not limited to planting and irrigation in relation to the City of Perris' regulations, ordinances, and codes. Unproduced comments of other items shown on this plan set shall not be taken or assumed as approved. The review of project drawings and specifications by the City of Perris and their consultants is confined to a review only and does not relieve the Landscape Architect of Work, of their responsibilities for the project. Through the use of the approved plans for construction the Landscape Architect of Work indemnifies the City of Perris, its officer's, agents and employees to be held harmless from any and all liability, claims, negligent acts, errors or omissions of the Landscape Architect of Work, their employees, agents, or consultants.

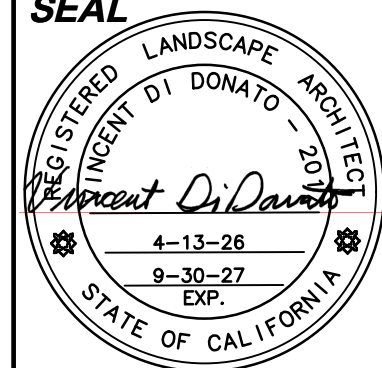
Christopher Baldino 05/12/2026
City of Perris, Landscape Plan Checker Plan Review Date



DATE	BY	MARK	APPR. DATE
	ENGINEER		CITY
	DESIGNED BY:	REVISIONS	CHECKED BY:
		DRAWN BY:	

ALHAMBRA GROUP
LANDSCAPE ARCHITECTURE
CALIFORNIA LICENSE #2017
RECREATION FACILITIES PLANNING
41635 ENTERPRISE CIRCLE NORTH, SUITE C
TEMECULA, CA 92590 (951) 296-6802

AG25-107



APPROVED BY: _____ DATE: _____
CITY ENGINEER

APPROVED BY: _____ DATE: _____

CITY OF PERRIS
ENGINEERING DEPARTMENT
24 S. D ST. SUITE 100
PERRIS CA 92570
951-956-2120

SCALE: AS SHOWN BENCHMARK: _____
DATE: _____

CITY OF PERRIS, CALIFORNIA
SOUTH PERRIS FIRE STATION
DETAILS AND SPECS

FOR: CITY OF PERRIS W.O.

SHEET NO. 11 OF 11 SHEETS FILE NO.